

A large industrial facility, likely a refinery or chemical plant, featuring a complex network of blue steel structures, silver pipes, and various tanks. The scene is set against a clear blue sky. A dark blue banner is overlaid on the top left of the image.

**Intelligently and Reliably Control
your Process**

Bettis™ XTE3000
Intelligent and reliable multi-turn electric actuator



Bettis XTE3000: extreme reliability and flexibility.



The XTE3000 is an intelligent multi-turn electric actuator from the Bettis family of actuators. Specifically designed to meet the most challenging valve automation demands of the Oil & Gas, Power, Municipal, and Process industries, the XTE3000 is compliant with a wide range of international standards and is an ideal solution to your plant's safety and reliability requirements.

Basic features such as a double-sealed terminal board, non-intrusive adjustment, data-logging, predictive maintenance capabilities, an advanced display, Bluetooth™ communications interface, and an absolute encoder are always included as standard.

BETTIS™

To strive for and maintain maximum levels of process efficiency, your valves always need to function as intended – no matter how much time has passed since you last activated them. Emerson provides its customers with highly reliable and innovative actuator technologies to drive their valves, with the Bettis XTE3000 electric actuator fitting the bill by combining robust mechanical versatility with programmable intelligence. Tailor your electric actuators for the depth of control you need in even the most extreme of environments.



Only the most **RELIABLE** actuators should drive your motorized valves.

The XTE3000 operates dependably in the harshest environments with minimal upkeep.

Reliability ▶ p3

Wide **VERSATILITY** to fit most applications.

The XTE3000 can slot right into the valve automation application you have in mind for it.

Versatility ▶ p5

Maintain full **CONTROL** and unlock intelligence in your valve applications.

The XTE3000 allows you to customize the level of control required for your valve automation application.

Control ▶ p7

Maximize **PRODUCTIVITY** with intuitive operation and reduced downtime.

The XTE3000 saves you time and money by being easy to use and maintain.

Productivity ▶ p9



Only the most **RELIABLE** actuators should drive your motorized valves.

Valve actuators absolutely must function all the time, every time – to do otherwise could result in thousands (if not millions) in lost production. Certified and designed to meet international standards, the simple yet rugged design of the Bettis XTE3000 ensures maximum reliability and safety even in the most extreme environments. Accordingly, the long service life of the actuator keeps maintenance requirements down to an absolute minimum.

Mechanical durability for a long service life



High-quality and specially-selected materials include an aluminum housing, cast-iron thrust bases, and cast-iron reduction gears (with bronze worm wheels where appropriate), to improve gear longevity and efficiency).

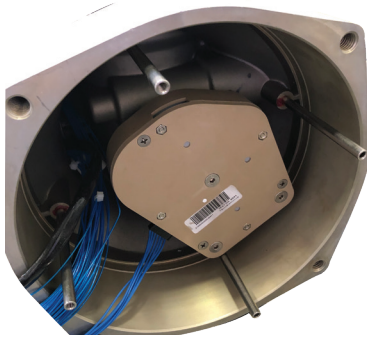


Simplified internal gear train is implemented as a single-stage reduction for transmission from motor to output shaft; extremely reliable, highly efficient, and easily maintainable.

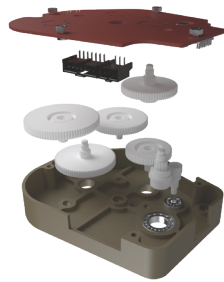


Oil bath lubrication maximizes mechanical component life. Said oil bath need never be replaced nor serviced during the actuator's entire service life.

Electrical system designed with reliability in mind



Simple and robust absolute position encoder sensor with high reliability and accuracy, which allows for position detection even when mains and back-up power are lost. Position accuracy is within 0.1% of true position, and position is recordable up to 8,580 full rotary cycles of the actuator's output shaft.

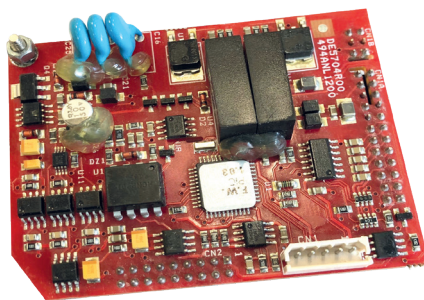


High performance and reliability due to solid-state controls. On the local interface, the push-buttons are robust and offer optional protective silicon covers to defend against build-up of deteriorative particulate over time.

Tested and certified for tough environmental conditions



Wide temperature range rated to working temperatures of -60°C (-76°F) to +85°C (+185°F).



Integrated heater equipped as standard to prevent damage to electronic boards caused by low temperatures.



Safety system is suitable for use up to Safety Integrity Level SIL 2 (one actuator) or SIL 3 (two actuators, one of which is for redundancy).



Wide VERSATILITY to fit most applications.

The Bettis XTE3000 is a versatile electric actuator, possessing the modularity and flexibility required to accommodate the physical compatibility demands of myriad industrial systems. XTE3000 is designed to meet most process requirements and its wide range of sizes offer torque and speed solutions for most valve automation requests.

A wide range of designed-for-purpose external gearboxes allow the XTE3000 to cover the torque requirements of most valve applications, and wide flexibility in orientation and mounting allow for installation of the XTE3000 combined actuator and gearbox “system” into tight and/or awkwardly-dimensioned parts of your plant.

Power and speed for a wide range of valve applications



Non-intrusive, intelligent multi-turn actuator with a user-friendly push-button panel for operation, configuration, and diagnostics.



Wide range of torque and speed (size-specific) from 30 to 1,440 Nm (22 to 1,062 ft lbs), up to 173 RPM.



Wide range of power supply options accommodate 208-575 VAC (3-ph, 60Hz), 220-690 VAC (3-ph, 50Hz), 120-240 VAC (1-ph, 60Hz), 110-230 VAC (1-ph, 50Hz) and 24-120 VDC.

Gears to cover any application



Quarter-Turn Worm Gearbox

Output torque, ON/OFF duty:

330 to 63,000 Nm (245 to 46,470 ft lbs)

Output torque, modulating duty:

330 to 27,720 Nm (245 to 20,450 ft lbs)

Speeds from 9 seconds/90° to 700 seconds/90°



Multi-Turn Spur Gearbox

Output torque:

1,750 to 57,000 Nm (13,000 to 42,000 ft lbs)

Speeds from 3 to 43 RPM

ON/OFF and positioning (inching) duty



Quarter-Turn Scotch Yoke Gearbox

Output torque:

15,000 to 1,000,000 Nm (11,000 to 737,500 ft lbs)

Speeds from 32 seconds/90° to 1,700 seconds/90°

ON/OFF duty



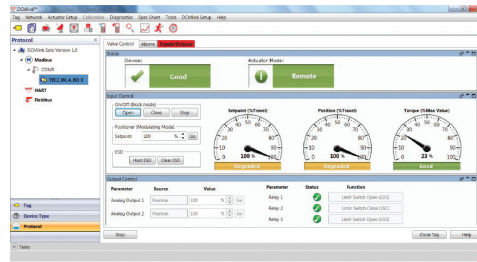
Maintain **CONTROL** and unlock **INTELLIGENCE** in your valve applications.

Your actuators need to do more than simply fully open and fully close valves. The configurable display of the Bettis XTE3000 is your interface with the actuator's software, which can be programmed to provide the depth of control that you require for your application. Field controls allow secure communication with site management systems, allowing for remote operation of the actuator.

Built-in intelligence



Intelligent Protection against events with the potential to damage the actuator, such as: jammed valves, unseating of “sticky” valves, motor over-heating, “hammering” against a valve obstruction, and instantaneous valve reversal.



Maintenance data viewable on DCMLink includes full internal data-logger records, operating data, alarms, valve torque curves, and provides important information on the performance and operating condition of valves and systems.



Speed sensor on the motor is equipped with a microprocessor to accurately record torque data. A thermostat also resides on top of the motor, which trips the motor if it over-heats (caused by the actuator being pushed beyond its rated torque).

All the connectivity you need

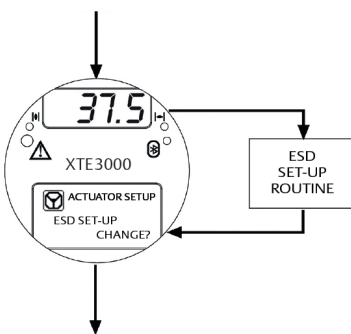


Wide range of networking protocols includes FOUNDATION Fieldbus, HART, Modbus, LonWorks, and PROFIBUS DPV0, DPV1, and redundant DPV2.

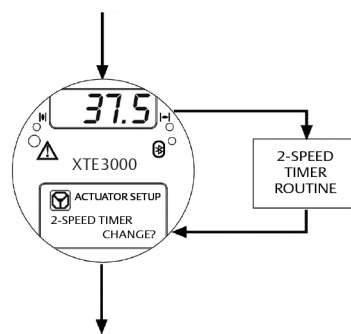


DCMLink connectivity for monitoring, diagnostics, and setup. The Betts XTE3000 Modbus card (remote) and Bluetooth (local) are fully compatible with the Emerson standard configuration tool, allowing for operation of actuators in the field through the same interface.

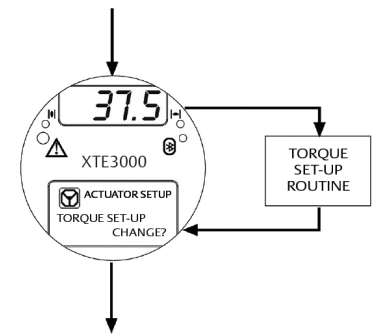
Control at your fingertips



Emergency Shut Down (ESD) signal can override any existing control and move the valve to a predetermined position of your choice (actuator must be connected to main power supply for ESD to function).



2-speed timer routine can extend valve operating time in the opening or closing direction.



Torque and valve position can have their endpoints customized as a function of valve position (anywhere from 0-100%) or set to specific torque values.



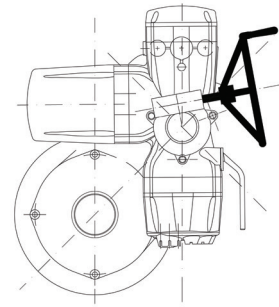
Maximize **PRODUCTIVITY** with intuitive operation and reduced downtime.

Simplicity in actuator design leads not only to improved reliability but also improved ease of use, which in turn improves your productivity. Avail yourself of the easy-to-access maintenance features of the Bettis XTE3000 to reduce downtime even further.

Easy to use and interact with



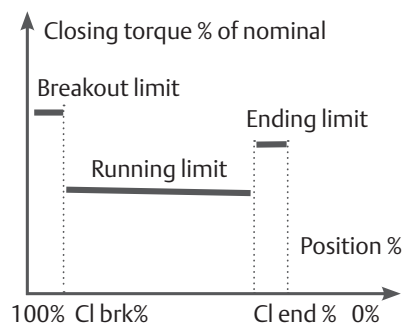
Easily-accessible terminal board is also double-sealed, which ensures maximum protection against dust and humidity.



Handwheel reducer (a side-mounted 10:1 bevel gear) enables easier and smoother manual operation by reducing the load required to turn the handwheel.



Multilingual interface in English, Italian, German, French, Portuguese, Spanish, Russian, and Turkish.

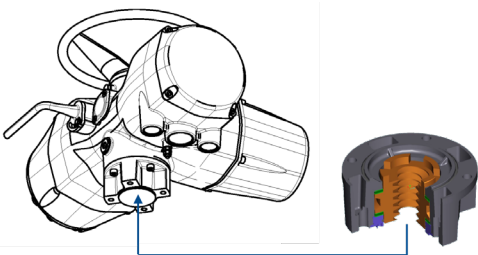


Limit position from 0% to 100% of the open position (0% = closed).



Intuitive user interface requires minimal training to use. The viewing glass is resistant to discoloration from strong sunlight, and the transfective LCD and OLED displays are easy to read in even the brightest or darkest environments.

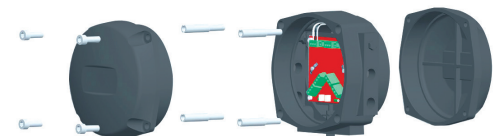
Convenient to maintain



Detachable coupling (thrust base) can be removed from the actuator and mounted to the valve independently, which means that the whole actuator does not need to be spun on to the valve during installation.



Open-frame electric motor is easy to access and is field-replaceable. No oil spillage will occur during motor service as the motor compartment is kept separate from the actuator oil bath.



Integrated bypass unit allows the XTE3000 to be removed from the field without opening the network loop, leaving just a small sealed unit on the ground to maintain bus continuity.

BETTIS™

For complete list of sales and manufacturing sites, please visit www.emerson.com/actuationtechnologieslocations or contact us at info.actuationtechnologies@emerson.com

NORTH & SOUTH AMERICA

19200 Northwest Freeway
Houston TX 77065
USA
T +1 281 477 4100

Av. Hollingsworth
325 Iporanga Sorocaba
SP 18087-105
Brazil
T +55 15 3413 8888

ASIA PACIFIC

No. 9 Gul Road
#01-02 Singapore 629361
T +65 6777 8211

No. 1 Lai Yuan Road
Wuqing Development Area
Tianjin 301700
P. R. China
T +86 22 8212 3300

MIDDLE EAST & AFRICA

P. O. Box 17033
Jebel Ali Free Zone
Dubai
T +971 4 811 8100

P. O. Box 10305
Jubail 31961
Saudi Arabia
T +966 3 340 8650

EUROPE

Holland Fazor 6
Székesfehérvár 8000
Hungary
T +36 22 53 09 50

Strada Biffi 165
29017 Fiorenzuola d'Arda (PC)
Italy
T +39 0523 944 411

 www.emerson.com

 [emrsn.co/facebook](https://www.facebook.com/emrsn.co)

 [emrsn.co/linkedin](https://www.linkedin.com/company/emrsn.co)

 [emrsn.co/twitter](https://twitter.com/emrsn.co)

www.Emerson.com/Bettis-XTE3000

The Emerson logo is a trademark and service mark of Emerson Electric Co. © 2019 Emerson Electric Co. Bettis™ is a registered trademark of one of the Emerson family of companies. All other marks are the property of their respective owners. © 2019 Emerson. All rights reserved.
BRO-02-04-0217-EN-CS / Printed in United States / 09-19



CONSIDER IT SOLVED.™