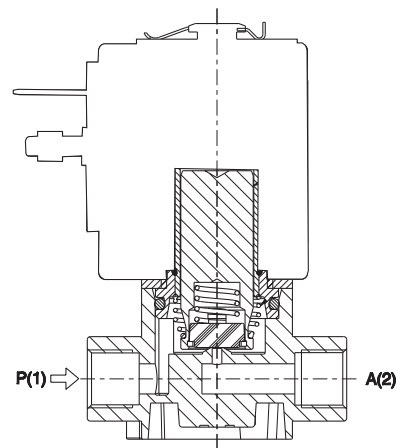
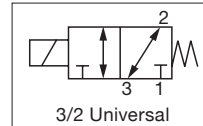
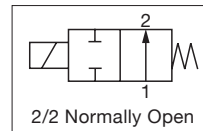
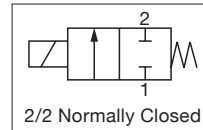


ASCO™ MINIATURE SOLENOID VALVES

GENERAL SERVICE VALVES

SERIES
L123 / L257 / L323

- Direct acting solenoid valve.
- Suitable to shut off liquid and gaseous fluids; suitable for low pressure steam and applications in sterilising autoclaves (verify the compatibility of materials with fluids in contact).
- Typical applications include
 - Dental equipment
 - Steam sterilizers
 - Bio-medical analyzers
 - Low pressure steam



| General Valve Information | |
|---------------------------|--|
| Body | PPS |
| Seals* | FKM |
| Internal Components | Stainless Steel Stainless Steel and PPS |
| Seat | PPS |
| Core Tube | Stainless Steel |
| Shading coil | Copper |
| Fluids | Liquids or gases |
| Fluid temperature | 0°C +130°C |
| Differential pressure | see "Specifications" [1 bar = 100 kPa] |
| Response time | ~ 20ms |
| Max. Viscosity | 37 cSt (mm ² /s) |

* Ensure that the compatibility of the materials in contact with the fluids is verified

| Electrical Characteristics | | | |
|---------------------------------|--|--|--|
| | ZA10A (UL class F - for UL cl.H: ZA34 (E153691)) | ZA10B (UL class F - for UL cl.H: ZA34 (E153691)) | ZA10G (UL class F - for UL cl.H: ZA34 (E153691)) |
| Continuous duty | ED 100% | ED 100% | ED 100% |
| Coil Insulation Class | F (155°C) on request class H (180°C) | F (155°C) | F (155°C) on request class H (180°C) |
| Connector | DIN 46340 - 3 pole connector (EN175301-803) | DIN 46340 - 3 pole connector (EN175301-803) | DIN 46340 - 3 pole connector (EN175301-803) |
| Encapsulation material | PPS (polyphenylsulfure) fiberglass reinforced | PET (polyethylene-terephthalate) fiberglass reinforced | PPS (polyphenylsulfure) fiberglass reinforced |
| Electrical Enclosure Protection | IP67 (EN60529) with plug connector | IP65 (EN60529) with plug connector | IP67 (EN60529) with plug connector |
| Standard Voltages* | DC | 12-24 V (+10% -5%) | 24V (+10% -5%) (UL) |
| | AC | 24V/50Hz - 110V/50Hz (120V/60Hz) - 230V/50Hz (+10% -15%) | |

* other voltages and frequencies on request

01094GB-2019-R01

| Specifications | | | | | | | | | | | | | | | | | | | | | |
|---------------------------------|------------------------|------------------|------|----------------------------|-------|------|---------|------------------|---------|---------|----------------|---------------|--------------------|----------|----------|-------|---------|----------|----------|-----|-------|
| Pipe Connection | Orifice Size | Flow Coefficient | | Operating Pressure, bar | | | | Power Rating (W) | | | Catalog Number | | Sealing Materials* | Notes | | | | | | | |
| | | | | min. | max. | | | | AC (VA) | | DC (W) | Threaded Body | | | | | | | | | |
| | | | | | Gases | | Liquids | | Inrush | Holding | | | | | Coil | | | | | | |
| | | | | | AC | DC | AC | DC | | | | | | | | | | | | | |
| mm | Kv (m ³ /h) | Cv | | | | | | | | | | | | | | | | | | | |
| 2/2 NC - Normally Closed | | | | | | | | | | | | | | | | | | | | | |
| G1/8 | 1.6 | 0.09 | 0.10 | 0 | 10 | 10 | 10 | 10 | 23 | 14 | 9 | L123V01 | ZA10A | FKM | 1,2,3 | | | | | | |
| | 2.3 | 0.15 | 0.17 | | 10 | 10 | 10 | 10 | | | | | | | | | | | | | |
| | 3.2 | 0.25 | 0.29 | | 10 | 4 | 10 | 4 | | | | | | | | | | | | | |
| Barbed ports | 1.6 | 0.09 | 0.10 | | 10 | 10 | 10 | 10 | | | | L123V02 | | | 2,3 | | | | | | |
| | 2.3 | 0.15 | 0.17 | | 10 | 10 | 10 | 10 | | | | | | | | | | | | | |
| | 3.2 | 0.25 | 0.29 | | 10 | 4 | 10 | 4 | | | | | | | | | | | | | |
| Barbed ports with ring nut | 1.6 | 0.09 | 0.10 | | 10 | 10 | 10 | 10 | | | | L123V03 | | | 2,3,4 | | | | | | |
| | 2.3 | 0.15 | 0.17 | | 10 | 10 | 10 | 10 | | | | | | | | | | | | | |
| | 3.2 | 0.25 | 0.29 | | 10 | 4 | 10 | 4 | | | | | | | | | | | | | |
| Barbed ports | 2.3 | 0.15 | 0.17 | | 10 | 10 | 10 | 10 | | | | L132V04 | | | 3,5 | | | | | | |
| | 3.2 | 0.25 | 0.29 | | 10 | 4 | 10 | 4 | | | | | | | | | | | | | |
| 2/2 NO - Normally Open | | | | | | | | | | | | | | | | | | | | | |
| G1/8 | 3 | 0.18 | 0.21 | 0 | 3 | 3 | 3 | 3 | 23 | 14 | 9 | L257V02 | ZA10A | FKM | 1, 3,5 | | | | | | |
| Barbed ports | | | | | | | | | | | | L257V01 | | | | 2,3 | | | | | |
| Barbed ports with ring nut | | 0.15 | 0.17 | | | | | | | | | L257V03 | | | | | 2,3,4 | | | | |
| G1/4 | 4.2 | 0.33 | 0.38 | | 2.5 | 2.5 | 2.5 | 2.5 | | | | 23 | | | 14 | 10 | | L257V04 | ZA10A | 1,3 | |
| | | | | | 2.5 | 2.5 | 2.5 | 2.5 | | | | 23 | | | 14 | 10 | L257V05 | ZA10A | | | |
| Barbed ports | | 0.26 | 0.30 | | 2.5 | 2.5 | 2.5 | 2.5 | | | | 23 | | | 14 | 10 | L257V05 | ZA10B | 3 | | |
| | | | | | 2.5 | 2.5 | 2.5 | 2.5 | | | | 23 | | | 14 | 10 | L257V05 | ZA10B | | | |
| Barbed ports | | 2.5 | 0.14 | | 0.16 | 5 | 5 | 5 | | | | 5 | | | 23 | 14 | 9 | L257V06 | ZA10A | | 2,3 |
| | | 3 | 0.18 | | 0.21 | 3 | 3 | 3 | | | | 3 | | | 23 | 14 | 9 | L257V06 | ZA10A | | |
| 3/2 U - Universal | | | | | | | | | | | | | | | | | | | | | |
| G1/8 | 2.3 | 0.2 | 0.23 | | 0 | 4 | 4 | 4 | | | | 4 | | | 23 | 14 | 12 | L323V01G | ZA10A | FKM | 1,2,3 |
| Barbed ports | | | | | | 4 | 4 | 4 | | | | 4 | | | 23 | 14 | 12 | | L323V02G | | |
| | | | | Barbed ports with ring nut | | 0.12 | 0.14 | 4 | 4 | 4 | 4 | 23 | 14 | 12 | L323V03G | ZA10A | 2,3,4 | | | | |
| 4 | | | | | | | | 4 | 4 | 4 | 23 | 14 | 12 | L323V03G | ZA10G | | | | | | |
| Barbed ports | | | | 0.2 | | 0.23 | 4 | 4 | 4 | 4 | 23 | 14 | 12 | L323V04G | ZA10A | 2,3 | | | | | |
| | | | | | | | 4 | 4 | 4 | 4 | 23 | 14 | 12 | L323V04G | ZA10G | | | | | | |

* Sealings: FKM = Fluoro-carbon elastomer

1 Maximum driving torque of the pipe fittings for thread connections = 2Nm

2 Only for use with steam, consider following values: PSmax 2.8 bar (max fluid temperature 130°)

3 The pressure values shown in the table refer to the potential of the valve: they can be lower depending on the connection system used

4 Maximum driving torque of ring nut 1.2Nm

5 Only for use with steam, consider following values: PSmax 2.8 bar (max fluid temperature 130°)

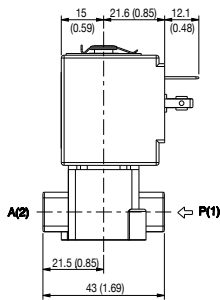
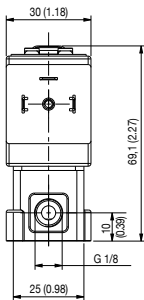
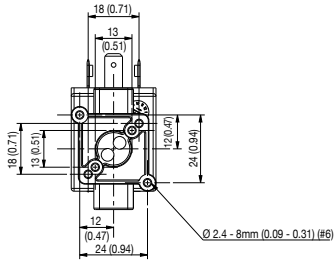
ASCO™ MINIATURE SOLENOID VALVES

GENERAL SERVICE VALVES

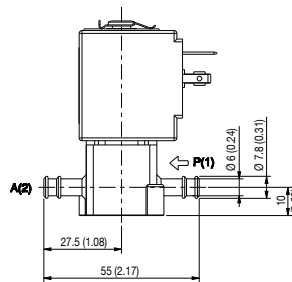
SERIES
L123/L257/L323

Dimensions: mm (inches)

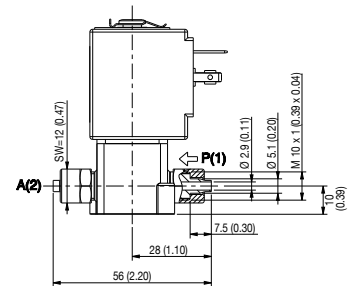
L123V01



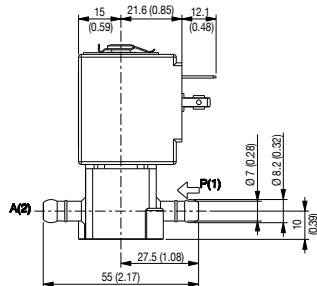
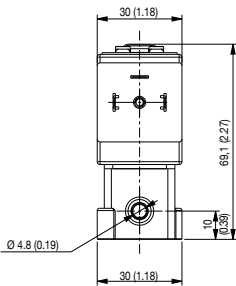
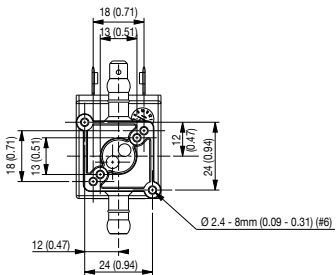
L123V02



L123V03



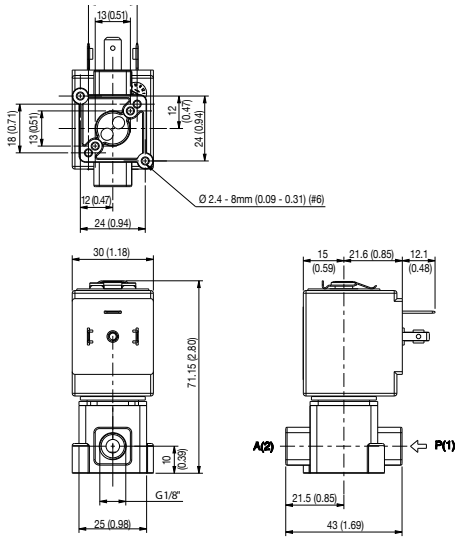
L123 V04



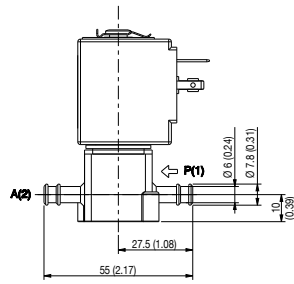
01094GB-2019-R01

Dimensions: mm (inches)

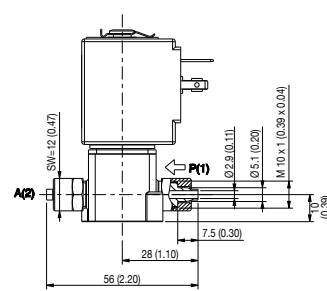
L257V02



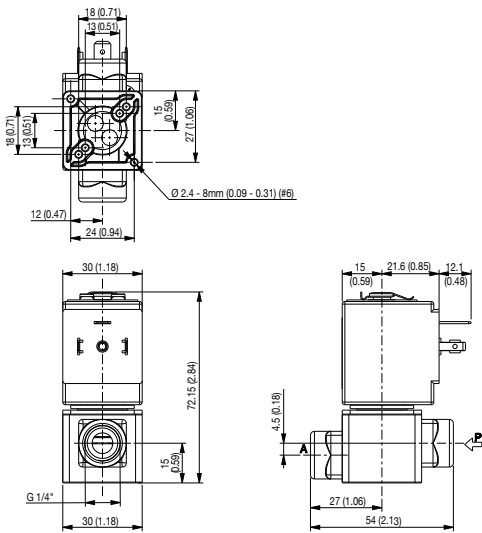
L257V01



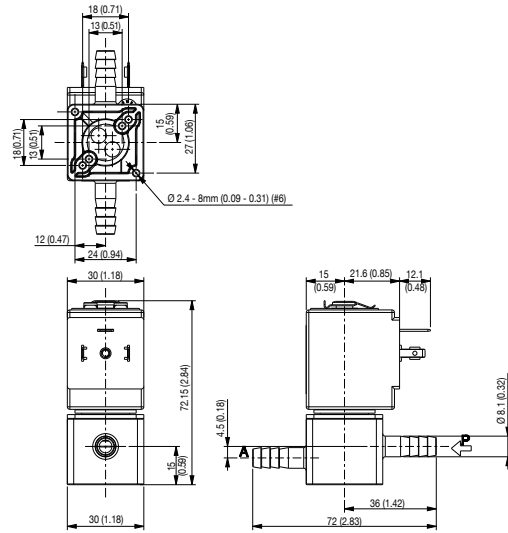
L257V03



L257V04



L257V05



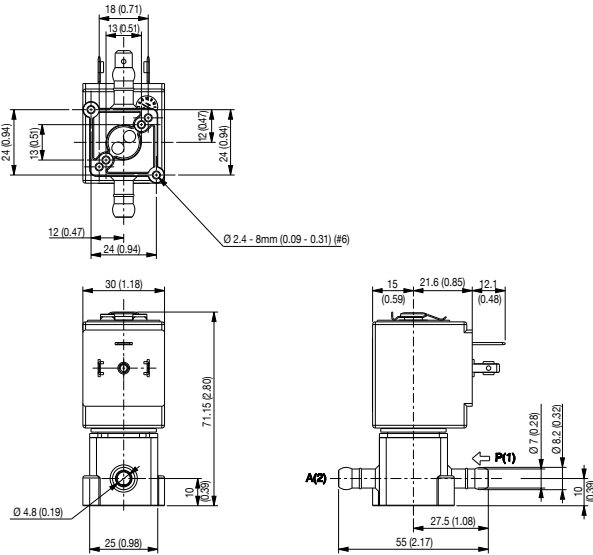
ASCO™ MINIATURE SOLENOID VALVES

GENERAL SERVICE VALVES

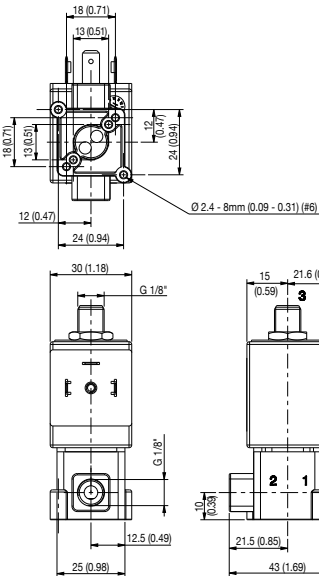
SERIES
L123/L257/L323

Dimensions: mm (inches)

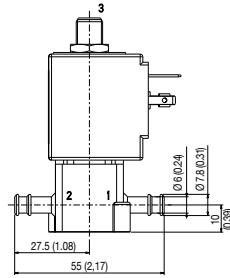
L257V06



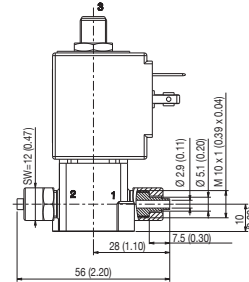
L323V01G



L323V02G



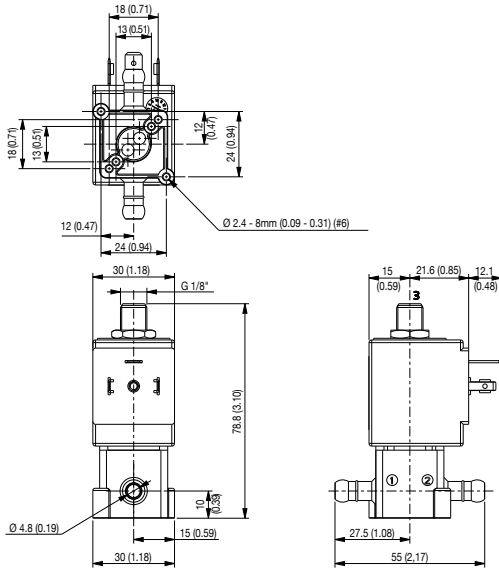
L323V03G



01094GB-2019-R01

Dimensions: mm (inches)

L323-V04G



Spare Part Kits

L123-V01/V02/V03/V04

| Kit description | Kit P.N. | Consisting of: |
|---------------------------|--------------|-----------------------------|
| Core kit | G3139401 | Core |
| Core return spring kit | G3022401 | N.10 core return spring |
| O-Ring guide assembly kit | GU2428000017 | N.10 O-Ring guide assembly |
| Guide assembly kit | G31487 | Guide assembly Coil clip |
| Coil | ZA10A | Coil |

L257-V01/V02/V03

| Kit description | Kit P.N. | Consisting of: |
|---------------------------|--------------|---|
| Core kit | G3138301 | Core return spring Core O-Ring guide assembly Pusher Sealing disc return spring Sealing disc |
| Core return spring kit | G290513-001 | N°.10 Core return spring |
| O-Ring guide assembly kit | GU2428000015 | N°.10 OR guide assembly |
| Guide assembly kit | G31488 | Guide assembly Coil clip |
| Coil | ZA10A | Coil |

L257-V04 / L257-V05

| Kit description | Kit P.N. | Consisting of: |
|---------------------------|----------------|---|
| Core kit | G3138301 | Core return spring Core O-Ring guide assembly Pusher Sealing disc return spring Sealing disc |
| Core return spring kit | G290513-001 | N°.10 Core return spring |
| O-Ring guide assembly kit | GU2428000015 | N°. 10 OR guide assembly |
| Guide assembly kit | G31488 | Guide assembly Coil clip |
| Coil | ZA10A ZA10B | Coil |

L257-V06

| Kit description | Kit P.N. | Consisting of: |
|---------------------------|--------------|---|
| Core kit | G3138301 | Core return spring Core O-Ring guide assembly Pusher Sealing disc return spring Sealing disc |
| Core return spring kit | G290513-001 | N°.10 Core return spring |
| O-Ring guide assembly kit | GU2428000015 | N°. 10 OR guide assembly |
| Guide assembly kit | G31488 | Guide assembly Coil clip |
| Coil | ZA10A | Coil |

L323-V01G/V02G/V03G/V04G

| Kit description | Kit P.N. | Consisting of: |
|---------------------------|----------------|----------------------------|
| Core kit | G3065101 | Core |
| Core return spring kit | G3022401 | N.10 core return spring |
| O-Ring guide assembly kit | GU2428000017 | N.10 O-Ring guide assembly |
| Guide assembly | 290564-001R | Guide assembly |
| Coil | ZA10A ZA10G | Coil |

Installation

- Solenoid valve can be mounted in any position; vertical with coil upwards preferred.
- When using any sealant for fittings, please check its chemical compatibility with body material (PPS).
- In case of disassembling for usual maintenance, the fixing screws of the guide assembly have to be tightened with 0.6±0.7 Nm torque.

