

The ASCO ARCS are specially designed redundant solution for emergency shut down valves (ON/OFF valves)⁽¹⁾ and various redundant configurations (1oo2, 2oo2 & 2oo3) to meet both safety & availability.



ASCO ARCS 2oo3 redundant solenoid valve piloting system combines the advantages of both 1oo2 & 2oo2 systems to achieve a high level of process safety and reliability.



⁽¹⁾ For fail safe application of control valves, please contact ASCO representative

Redundant Configurations

1oo2 - Redundancy built to achieve a high level of process safety
Hardware fault tolerant = 1 SIL3

2oo2 - Redundancy built to achieve high availability and prevent nuisance trips
Hardware fault tolerant = 0 SIL2

2oo3 - Redundancy built to achieve a high level of process safety and availability
Hardware fault tolerant = 1 SIL3

** 2oo3 configuration with 3 channels and 3oo4 configuration with 4 channels wiring



Solenoid Valves are Based on ASCO 327-Series, 3 Way

- Direct-acting solenoid valve technology
- Low friction = Low power = High reliability
- Reduced total cost of ownership (TCO)

Options Available

- Aluminum or stainless steel solenoid operator option including Flameproof or Intrinsically safe
- Manual operator or manual reset function
- Pressure gauge, visual indicator (stainless steel)
- Solenoid valve diagnostics (pressure or go switch options)
- Options with Ex proof and intrinsically safe wiring for pressure switches
- High flow and low temperature available



Full Range of Certifications and Approvals

327 certified for SIL applications (Exida)
Up to SIL 3 accreditation from Exida for redundant configuration

Online Maintenance

Common by pass - allows online replacement of solenoid valve
Individual isolation - 2oo2 & 2oo3 - Hot swapping that allow on-line replacement of solenoid valve while maintaining the system capability to bring the process to safe mode in the event of an emergency.

Features & Benefits

- Complete redundant solenoid valve configuration (1oo2/2oo2/2oo3)
- Compact and fully integrated module
- Direct valve-to-valve design
- Status indication & feedback
- Online maintenance-individual isolation / common bypass
- Safe & proven technology

TR000117ENUS-05_05-23
Availability, design and specifications are subject to change without notice. All rights reserved.

General

Differential pressure 1 - 10 bar [1 bar = 100kPa]
Maximum viscosity 65 cSt (mm²/s)
Response times 75 - 100 ms

Fluid	Temperature Range (TS)	Seal Materials
Dry & Non Lubricated Air	-20°C to +80°C	FPM ⁽¹⁾
	-40°C to +40°C	(F)VMQ

⁽¹⁾ Highflow limited to -10°C

Specifications

Pipe Size	Operating Pressure		Power Level	Prefix Solenoid Options														Operation	Fluid Temperature Ts ⁽³⁾ (°C)	Material of Construction	Basic Solenoid Valve	Basic Ordering Code for Solenoid Valve					
				Exd		Ex e mb		Exi		Type 7/9				IP67	IP65												
NPT	Min	Max	~/=	NF/ WSNF	WSCR	EM/ WSCREM	NFIS/ WSNFIS/ WSCRIS	WSTIS	EV	EVHT	EVMF	EVMH	JBEF	WP/ WS	SC												
1/4	0/1 ⁽²⁾	10	BP															Auto Reset	-20 to +120	SS316L	327G042	536408					
																				Auto Reset	-40 to +55	SS316L	327G052	545554			
																					Manual Reset	-20 to +120	SS316L	327G032	536407		
																						Auto Reset	-20 to +120	SS316L	327B202	536398	
																						Auto Reset	-50 to +60	SS316L	327B212	545550	
																						Manual Reset	-20 to +120	SS316L	327B232	536401	
			MP																		Auto Reset	-20 to +120	Aluminium	327B203	536403		
																						Auto Reset	-20 to +120	SS316L	327B102	536397	
																						Auto Reset	-50 to +60	SS316L	327B112	545549	
																						Manual Reset	-20 to +120	SS316L	327B132	536400	
																						Manual Reset	-50 to +60	SS316L	327B182	545552	
																						Auto Reset	-20 to +120	SS316L	327H102	536404	
																						Manual Reset	-20 to +120	SS316L	327H132	536409	
																						Auto Reset	-50 to +60	SS316L	327H112	545555	
																						Manual Reset	-50 to +60	SS316L	327H182	545556	
																						Auto Reset	-20 to +120	Aluminium	327B103	536402	
				RP																		Auto Reset	-20 to +120	SS316L	327B302	536399	
																						Auto Reset	-50 to +60	SS316L	327B312	545551	
																						Manual Reset	-20 to +120	SS316L	327B332	536406	
																							Manual Reset	-50 to +60	SS316L	327B382	545553
																							Auto Reset	-20 to +120	Aluminium	327B303	536405
																							Auto Reset	-20 to +60	SS316L	327H302	548533
				LP																		Auto Reset	-50 to +60	SS316L	327H312	548534	
																						Auto Reset	-20 to +60	SS316L	307B005 ⁽¹⁾	503838	
																		Auto Reset	-10 to +90	SS316L	327A610	543587					
																		Auto Reset	-50 to +60	SS316L	327A606	543588					
																		Manual Reset	-10 to +90	SS316L	327A620	543589					
																		Manual Reset	-40 to +40	SS316L	327A616	543590					
1/2			BP																Auto Reset	-10 to +90	SS316L	327A610	543587				
																				Auto Reset	-50 to +60	SS316L	327A606	543588			
																				Manual Reset	-10 to +90	SS316L	327A620	543589			
MP																		Manual Reset	-10 to +90	SS316L	327A620	543589					
																		Auto Reset	-20 to +120	Aluminium	327B303	536405					
																		Auto Reset	-20 to +60	SS316L	327H302	548533					
RP																		Auto Reset	-50 to +60	SS316L	327H312	548534					
																		Auto Reset	-20 to +60	SS316L	307B005 ⁽¹⁾	503838					
																		Manual Reset	-40 to +40	SS316L	327A616	543590					

⁽¹⁾ For detail specification and dimensions, please refer to ASCO representative
⁽²⁾ Zero bar applicable for redundant configuration without online maintenance and diagnostic feature options only
⁽³⁾ Can be limited by the operator ambient temperature range for explosion proof solenoids

Flow Rate

Size	Function	Flow Coefficient Kv	
		(m ³ /h)	(l/m)
1/4"	1o02	0.19	3.2
	2o02	0.39	6.5
	2o03	0.29	4.8
1/2"	1o02	0.39	6.5
	2o02	0.76	13
	2o03	0.64	11

Explanation of Temperature Ranges of Solenoid Valves

Valve temperature range The valve temperature range (TS) is determined by the selected seal material, the temperature range for proper operation of the valve and sometimes by the fluid (e.g. steam)

Operator ambient temperature range The operator ambient temperature range is determined by the selected power level and the safety code

Total temperature range The temperature range of the complete solenoid valve is determined by the limitations of both temperature range above

TR000117ENUS-05_05-23

Electrical Characteristics

Prefix	Inrush (~) VA	Holding (~) VA	Power Rating		Operator Ambient Temperature Range (°C)	Safety Code	Coil Insulation Class	Electrical Enclosure Protection (EN60529)
			(~) W	Hot/Cold = W				
Basic Power (BP)								
EV	12	12	12	11.6	-40 to +60	Class I, Division 1, Groups A, B, C, D, Class II, Division 1, Groups E, F, G	F	Type 7/9, moulded
JBEF	12	12	12	11.6	-40 to +60	Class I, Division 1, Groups B, C, D, Class II, Division 1, Groups E, F, G	F	Type 7/9, moulded, Alu junction box
NF/WSNF	14.1	14.1	14.1	11/14	-60 to +40/60/90	II2G Ex db IIC Gb T6/T5, II2D Ex tb IIIC Db	H	IP66/67, Alu/SS
WSCR	10	10	10	9/10	-60 to +25/60/90	II2G Ex db IIC Gb T5/T4/T3, II2D Ex t IIIC Db	H	IP66/67, SS
EM	14.1	14.1	14.1	11/14	-40 to +40	II2G Ex eb mb IIC Gb T3, II2D Ex tb IIIC Db	H	IP66/67, steel
WSCREM	10	10	10	9/10	-60 to +25/60/90	II2G Ex eb mb IIC Gb T5/T4/T3, II2D Ex tb IIIC Db	H	IP66/67, SS
WP/WS	14.1	14.1	14.1	11/14	-40 to +90	EN 60730	H	IP67, steel/SS
SC	14.1	14.1	14.1	11/14	-40 to +90	EN 60730	F	IP65, moulded
Medium Power (MP)								
NF/WSNF	5.8	5.8	5.8	5.2/5.7	-60 to +60/75/90	II2G Ex db IIC Gb T6/T5/T4, II2D Ex tb IIIC Db	H	IP66/67, Alu/SS
WSCR	5.8	5.8	5.8	5.2/5.7	-60 to +40/60/90	II2G Ex db IIC Gb T6/T4/T3, II2D Ex t IIIC Db	H	IP66/67, SS
EM	5.8	5.8	5.8	5.2/5.7	-40 to +40/75/90	II2G Ex eb mb IIC Gb T5/T4, II2D Ex tb IIIC Db	H	IP66/67, steel
WSCREM	5.8	5.8	5.8	5.2/5.7	-60 to +40/60/90	II2G Ex eb mb IIC Gb T6/T4, II2D Ex tb IIIC Db	H	IP66/67, SS
WP/WS	5.8	5.8	5.8	5.2/5.7	-40 to +90	EN 60730	H	IP67, steel/SS
SC	5.8	5.8	5.8	5.2/5.7	-40 to +90	EN 60730	F	IP65, moulded
Reduced Power (RP)								
NF/WSNF	3.7	3.7	3.7	3.2/3.6	-60 to +60	II2G Ex db IIC Gb T6, II2D Ex tb IIIC Db	H	IP66/67, Alu/SS
WSCR	3.7	3.7	3.7	3.2/3.6	-60 to +40/60/90	II2G Ex db IIC Gb T6/T5/T4, II2D Ex t IIIC Db	H	IP66/67, SS
EM	3.7	3.7	3.7	3.2/3.6	-40 to +40/55	II2G Ex eb mb IIC Gb T6/T5, II2D Ex tb IIIC Db	H	IP66/67, steel
WSCREM	3.7	3.7	3.7	3.2/3.6	-60 to +40/60/90	II2G Ex eb mb IIC Gb T6/T5/T4, II2D Ex tb IIIC Db	H	IP66/67, SS
WP/WS	3.7	3.7	3.7	3.2/3.6	-40 to +55	EN 60730	H	IP67, steel/SS
SC	3.7	3.7	3.7	3.2/3.6	-40 to +55	EN 60730	F	IP65, moulded
Low Power (LP)								
(NF/WSNF/WSCR)	1.85	1.85	1.85	1.5/1.8	-60 to +55	II2G Ex db IIC Gb T6, II2D Ex tb IIIC Db	H	IP66/67, Alu/SS
WSCREM	1.85	1.85	1.85	1.5/1.8	-60 to +55	II2G Ex eb mb IIC Gb T6, II2D Ex tb IIIC Db	H	IP66/67, SS
EV	-	-	-	2	-20 to +60	Class I, Division 1, Groups A, B, C, D, Class II, Division 1, Groups E, F, G	F	Type 7/9, moulded
EVHT	-	-	-	2.7	-20 to +90	Class I, Division 1, Groups A, B, C, D, Class II, Division 1, Groups E, F, G	H	Type 7/9, moulded
EVMF	-	-	-	2.4	-50 to +60	Class I, Division 1, Groups A, B, C, D, Class II, Division 1, Groups E, F, G	F	Type 7/9, moulded, surge suppression
EVMH	-	-	-	2.9	-20 to +90	Class I, Division 1, Groups A, B, C, D, Class II, Division 1, Groups E, F, G	H	Type 7/9, moulded, surge suppression, High Ambient
JBEF	-	-	-	2	-40 to +60	Class I, Division 1, Groups B, C, D, Class II, Division 1, Groups E, F, G	F	Type 7/9, moulded, Alu junction box
Intrinsically Safe (IS)								
(NFIS/WSNFIS/ WSCRIS)	-	-	-	0.5	-40 to +60	II2G Ex ia IIC T6 Gb, II2D Ex tb IIIC Db	H	IP66/67, Alu/SS
WSTIS	-	-	-	0.4	-20 to +60	Ex ia IIC T6 Gb, Ex t IIIC Db	H	IP66/67, SS

Electrical Connections

Code	Connection	Prefix
FN	Solenoid Housing, Die Cast Aluminum, Explosion Proof with 1/2 NPT Cable Entry, Safety Code II2G Ex db IIC Gb T6/T5/T4, II2D Ex tb IIIC Db, ATEX/IEC Ex Certified	NF
FT	Solenoid Housing, Die Cast Aluminum, Explosion Proof with M20*1.5 Cable Entry, Safety Code II2G Ex db IIC Gb T6/T5/T4, II2D Ex tb IIIC Db, ATEX/IEC Ex Certified	NFET
FS	Solenoid Housing, Stainless Steel, Explosion Proof with 1/2 NPT Cable Entry, Safety Code II2G Ex db IIC Gb T6/T5/T4, II2D Ex tb IIIC Db (WSNF-IECEx) ATEX/IEC Ex Certified	WSNF
FU	Solenoid Housing, Stainless Steel, Explosion Proof with M20 * 1.5 Cable Entry, Safety Code II2G Ex db IIC Gb T6/T5/T4, II2D Ex tb IIIC Db, (WSNF-IEC Ex) ATEX/IEC Ex Certified	WSNFET
WR	Solenoid Housing, Stainless Steel, Explosion Proof with 1/2 NPT Cable Entry, Safety Code II2G Ex db IIC Gb T6/T5/T4/T3, II2D Ex t IIIC Db, (WSCR-IEC Ex) ATEX/IEC Ex Certified	WSCR
X2	Solenoid Housing, Stainless Steel, Explosion Proof with M20 * 1.5 Cable Entry, Safety Code II2G Ex db IIC Gb T6/T5/T4/T3, II2D Ex t IIIC Db, (WSCR-IEC Ex) ATEX/IEC Ex Certified	WSCRET
F1	Solenoid Housing, Die Cast Aluminum, Intrinsically Safe with 1/2 NPT Cable Entry, Safety Code II2G Ex ia IIC Gb T6, II2D Ex tb IIIC Db (Standard Flow Only), ATEX/IEC Ex Certified	NFTIS
X1	Solenoid Housing, Die Cast Aluminum, Intrinsically Safe with M20 * 1.5 Cable Entry, Safety Code II2G Ex ia IIC Gb T6, II2D Ex tb IIIC Db (Standard Flow Only), ATEX/IEC Ex Certified	NFETIS
FV	Solenoid Housing, Stainless Steel, Intrinsically Safe with 1/2 NPT Cable Entry, Safety Code II2G Ex ia IIC Gb T6, II2D Ex tb IIIC Db (Standard Flow Only), ATEX/IEC Ex Certified	WSNFETIS
FW	Solenoid Housing, Stainless Steel, Intrinsically Safe with M20*1.5 Cable Entry, Safety Code II2G Ex ia IIC Gb T6, II2D Ex tb IIIC Db (Standard Flow Only), ATEX/IEC Ex Certified	WSNFETIS
X3	Solenoid Housing, Stainless Steel, Intrinsically Safe with 1/2 NPT Cable Entry, Safety Code: II2G Ex ia IIC Gb T6, II2D Ex tb IIIC Db (Standard Flow Only), ATEX/IEC Ex Certified	WSCRTIS
X4	Solenoid Housing, Stainless Steel, Intrinsically Safe with M20 * 1.5 Cable Entry, Safety Code: II2G Ex ia IIC Gb T6, II2D Ex tb IIIC Db (Standard Flow Only), ATEX/IEC Ex Certified	WSCRETIS
X5	Solenoid Housing, Stainless Steel, Intrinsically Safe with 1/2 NPT Cable Entry, Safety Code: Ex ia IIC Gb T6, Ex t IIIC Db (Standard Flow Only), CCOE	WSTIS
X6	Solenoid Housing, Stainless Steel, Intrinsically Safe with M20 * 1.5 Cable Entry, Safety Code: Ex ia IIC Gb T6, Ex t IIIC Db (Standard Flow Only), CCOE	WSETIS
MV	Solenoid Housing, Steel, Increased Safety with 1/2"NPT Cable Entry, Safety Code: II2G Ex eb mb IIC Gb T6/T5/T4/T3, II2D Ex tb IIIC Db, ATEX/IEC Ex Certified	EM
MT	Solenoid Housing, Steel, Increased Safety with M20 *1.5 Cable Entry, Safety Code: II2G Ex eb mb IIC Gb T6/T5/T4/T3, II2D Ex tb IIIC Db, ATEX/IEC Ex Certified	EMT
X7	Solenoid Housing, Stainless Steel, Increased Safety with 1/2"NPT Cable Entry, Safety Code: II2G Ex eb mb IIC Gb T6/T5/T4/T3, II2D Ex tb IIIC Db, ATEX/IEC Ex Certified	WSCREM
X8	Solenoid Housing, Stainless Steel, Increased Safety with M20 *1.5 Cable Entry, Safety Code: II2G Ex eb mb IIC Gb T6/T5/T4/T3, II2D Ex tb IIIC Db, ATEX/IEC Ex Certified	WSCREMET
X9	Waterproof IP67 - with M20*1.5 Cable Gland, Metal Enclosure	WP
XA	Waterproof IP67 - M20*1.5 Cable Entry, Metal Enclosure	WPET
XC	Waterproof IP67 - with M20*1.5 Cable Gland, Stainless Steel Enclosure	WS
XD	Waterproof IP67 - M20*1.5 Cable Entry, Stainless Steel Enclosure	WSET
XE	Waterproof IP67 - 1/2"NPT Cable Entry, Metal Enclosure	WPT
XF	Waterproof IP67 - 1/2"NPT Cable Entry, Stainless Steel Enclosure	WST
S1	Spade Plug Connector (EN/IEC 60730), IP65	SC
H1	Explosionproof, Epoxy molded solenoid housing with integral ½" NPT stainless steel conduit hub and 18" leads, UL/CSA approvals, Class I Div 1 Groups A, B, C, D; Class II Div 1 Group E, F, G (UL/CSA -Solenoid only)	EV/EVHT
H6	Surge Suppression, Explosionproof, Epoxy Molded Solenoid Housing with Integral ½" NPT Stainless Steel Conduit Hub and 18" Leads, UL/CSA Approvals, Class I Div 1 Groups A, B, C, D; Class II Div 1 Group E, F, G, (UL/CSA -Solenoid Only)	EVMF/ EVMH
7N	Explosionproof Junction Box Enclosure, Die Cast Aluminum, ½" NPT Conduit Connection, UL/CSA Approvals, Class I, Div 1 Groups B, C, D; Class II, Div. 1, Groups E, F, G, (UL/CSA -Solenoid Only)	JBEF

How to Order

	8	141	A	1	1	0	00	A00	00
--	----------	------------	----------	----------	----------	----------	-----------	------------	-----------

Port Type	
8	NPT

Product Series	
141	ARCS DA Series

Revision	
A	Initial Release

Function	
1	1oo2 Manifold Assembly, without Online Maintenance & without Diagnostic
2	1oo2 Manifold Assembly, with Common By-pass & without Diagnostic
3	2oo2 Manifold Assembly, without Online Maintenance and Diagnostic
4	2oo2 Manifold Assembly, without Online Maintenance, with Diagnostic
5	2oo2 Manifold Assembly, with Common By-pass with Diagnostic
6	2oo2 Manifold Assembly, with Individual Isolation with Diagnostic
7	2oo3 Manifold Assembly, without Diagnostic and Online Maintenance
8	2oo3 Manifold Assembly, without Online Maintenance, with Diagnostic
9	2oo3 Manifold Assembly, with Common By-pass with Diagnostic
A	2oo3 Manifold Assembly, with Individual Isolation and with Diagnostic

Port Size / Body Material	
1	Standard Flow-Port Size 1/4" NPT - Stainless Steel 316
2	Standard Flow-Port Size 1/4" NPT - Aluminum
5	High Flow-Port Size 1/2" NPT - Stainless Steel 316

Solenoid Valve-3 Way, Direct Acting	
0	327B102 - Auto Reset, FPM Sealing, SS, Power 3.6/3.7W (RP)
1	327B202 - Auto Reset, FPM Sealing, SS, Power 5.7/5.8W (MP)
2	327B302 - Auto Reset, FPM Sealing, SS, Power 1.8W & IS 0.5W (LP)
3	327B112 - Auto Reset, FVMQ Sealing (Low Temperature), SS, Power 3.6/3.7W (RP) ⁽⁵⁾
4	327B212 - Auto Reset, FVMQ Sealing (Low Temperature), SS, Power 5.7/5.8W (MP) ⁽⁵⁾
5	327B312 - Auto Reset, FVMQ Sealing (Low Temperature), SS, Power 1.8W & IS 0.5W (LP) ⁽⁵⁾
7	327B132 - Tamper Proof Reset, FPM Sealing, SS, Power 3.6/3.7W (RP)
8	327B232 - Tamper Proof Reset, FPM Sealing, SS, Power 5.7/5.8W (MP)
9	327B332 - Tamper Proof Reset, FPM Sealing, SS, Power 1.8W (LP)
A	327B182 - Tamper Proof Reset, FVMQ Sealing (Low Temperature), SS, Power 3.6/3.7W (RP) ⁽⁵⁾
C	327B382 - Tamper Proof Reset, FVMQ Sealing (Low Temperature), SS, Power 1.8W (LP) ⁽⁵⁾
D	327G042 - Auto Reset, FPM/FKM Sealing Normally Closed, Stainless Steel, Power 11.6/12W. Fluid Temperature -20°C to +120°C
E	327G052 - Auto Reset, (F)VMQ (Low Temperature) Sealing Normally Closed, Stainless Steel, Power 11.6/12W. Fluid Temperature -40°C to +55°C ⁽⁵⁾
F	327G032 - Tamper Proof Reset, FPM/FKM Sealing Normally Closed, Stainless Steel, Power 11.6/12W. Fluid Temperature -20°C to +120°C
G	327H302 - Auto Reset, FKM Sealing Normally Closed, Stainless Steel, Power 2/2.7W. Fluid Temperature -20°C to +60°C
V	327H312 - Auto Reset, VMQ Sealing Normally Closed, Stainless Steel, Power 2/2.7W. Fluid Temperature -50°C to +60°C ⁽⁵⁾
H	327H102 - Auto Reset, FPM Sealing, SS, Power 3.9W (RP) ⁽⁴⁾
J	327H132 - Tamper Proof Reset, FPM Sealing, SS, Power 3.9W (RP) ⁽⁴⁾
K	327H112 - Auto Reset, FVMQ Sealing (Low Temperature), SS, Power 3.9W (RP) ⁽⁴⁾⁽⁵⁾
L	327H182 - Tamper Proof Reset, FVMQ Sealing (Low Temperature), SS, Power 3.9W (RP) ⁽⁴⁾⁽⁵⁾
M	327B103 - Auto Reset, FPM Sealing, Aluminum, Power 3.6/3.7W (RP) ⁽²⁾
N	327B203 - Auto Reset, FPM Sealing, Aluminum, Power 5.7/5.8W (MP) ⁽²⁾
P	327B303 - Auto Reset, FPM Sealing, Aluminum, Power 1.8W & IS 0.5W (LP) ⁽²⁾
Q	307B005 - Pilot Operated, Auto Reset, FPM Sealing, SS, Power IS 0.35W (LP) ⁽³⁾⁽⁴⁾
R	327A610 - High Flow Auto Reset, FPM Sealing, SS, Power 14/14.1W (BP) ⁽¹⁾
S	327A606 - High Flow Auto Reset, FVMQ Sealing (Low Temperature), SS, Power 10W (BP) ⁽¹⁾⁽⁵⁾
T	327A620 - High Flow Manual Reset, FPM Sealing, SS, Power 5.7/5.8W (MP) ⁽¹⁾
U	327A616 - High Flow Manual Reset, FVMQ Sealing (Low Temperature), SS, Power 3.6/3.7W (RP) ⁽¹⁾⁽⁵⁾

Voltage			
H3	12V DC	F3	12V DC
H1	24V DC	F1	24V DC
H9	48V DC	F9	48V DC
HJ	110V DC	FJ	110V DC
HD	120V DC	FD	120V DC
J1	125V DC	E1	125V DC
HQ	24V/50-60HZ AC	FQ	24V/50-60HZ AC
JY	110V/50-60HZ AC	EY	110V/50-60HZ AC
HC	115V/50-60HZ AC	FC	115V/50-60HZ AC
HA	120V/50-60HZ AC	FA	120V/50-60HZ AC
JV	220V/50-60HZ AC ⁽⁶⁾	EV	220V/50-60HZ AC ⁽⁶⁾
HH	230V/50-60HZ AC ⁽⁶⁾	FH	230V/50-60HZ AC ⁽⁶⁾

⁽⁶⁾ Not applicable for low and reduced power options

Option List ⁽⁸⁾	
A00	No options
A01	SS Visual Indicator
A02	SS Pressure Gauge
B01	Pressure Switch - Potential Free for Intrinsically Safe Wiring
B02	Pressure Switch - Potential Free for Exproof Wiring (Flying Leads)
M01	with Manual Override ⁽⁷⁾
D01	INMETRO
D02	KOSHA
D03	CUTR
D04	CCC/NEPSI
D05	PESO
D09	TS

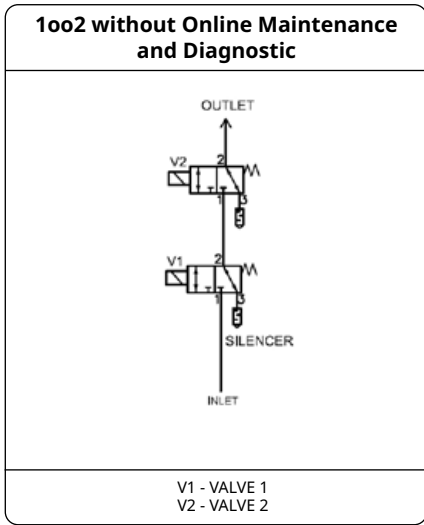
⁽⁷⁾ Manual override M01 option applicable for auto reset solenoid valve only
⁽⁸⁾ Select options using +
 Example: A01+B01+D01
 For multiple options, please use online configurator on the website to generate the part number or consult ASCO representative

Electrical Connection Type			
FN	NF	H1	EV/EVHT
FT	NFET	H6	EVMF/EVMH
FS	WSNF	7N	JBEF
FU	WSNFET	MV	EM
WR	WSCR	MT	EMT
X2	WSCRET	X7	WSCREM
F1	NFTIS ⁽⁹⁾	X8	WSCREMET
X1	NFETIS ⁽⁹⁾	X9	WP
FV	WSNFETIS ⁽⁹⁾	XA	WPET
FW	WSNFETIS ⁽⁹⁾	XC	WS
X3	WSCR ⁽⁹⁾	XD	WSET
X4	WSCR ⁽⁹⁾	XE	WPT
X5	WSTIS ⁽⁹⁾	XF	WST
X6	WSETIS ⁽⁹⁾	S1	SC

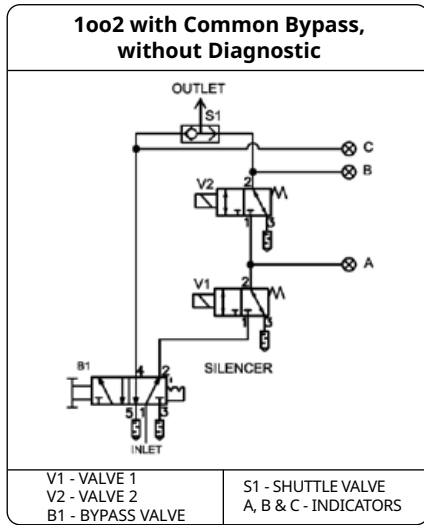
⁽⁹⁾ Intrinsically safe voltage selection restricted to 24Vdc H1 option

⁽¹⁾ Applicable only for high flow-1/2" in port size selection
⁽²⁾ Applicable only for aluminum version in body material selection
⁽³⁾ Applicable for electrical connection type X5 and X6.
 For other specification and dimensions please contact ASCO representative
⁽⁴⁾ Applicable for electrical connection type H1
⁽⁵⁾ Selection in options list A01 & B01 are not applicable

Disclaimer: Selection chart shown for reference.
 For detailed configuration/available options/other explosion proof operators,
 please use ARCS configurator in www.asco.com or contact local ASCO sales office.



Schematic 1

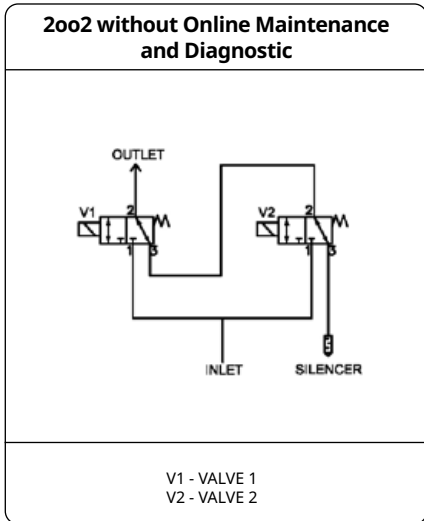


Schematic 2

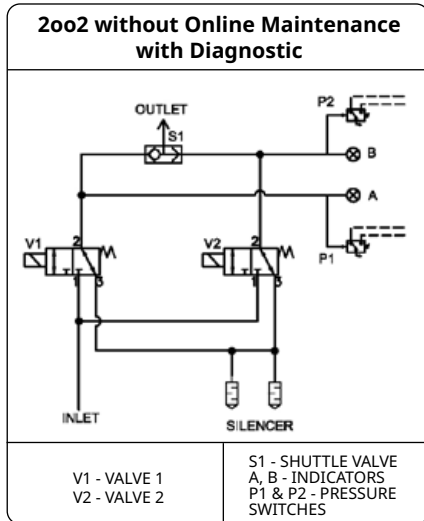
1oo2 Logic Table

CH 1	CH 2	Outlet
V1	V2	
1	1	1
1	0	0
0	1	0
0	0	0

CH 1 - CHANNEL 1
CH 2 - CHANNEL 2
0 - VALVE DE-ENERGIZED
1 - VALVE ENERGIZED



Schematic 3

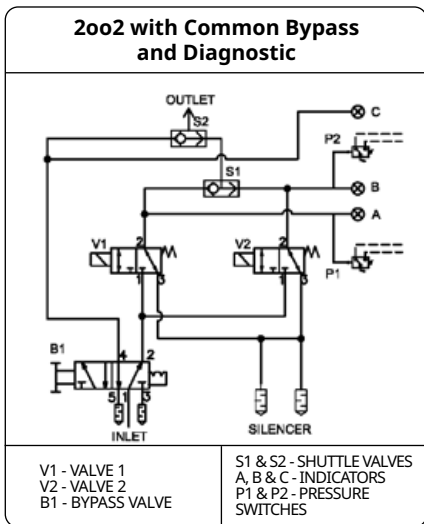


Schematic 4

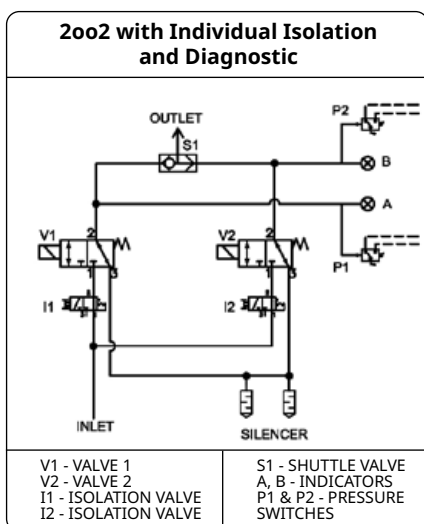
2oo2 Logic Table

CH 1	CH 2	Outlet
V1	V2	
1	1	1
1	0	1
0	1	1
0	0	0

CH 1 - CHANNEL 1
CH 2 - CHANNEL 2
0 - VALVE DE-ENERGIZED
1 - VALVE ENERGIZED

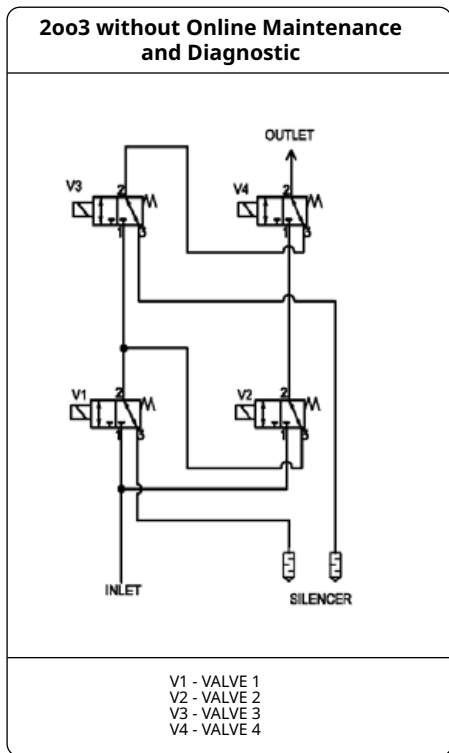


Schematic 5

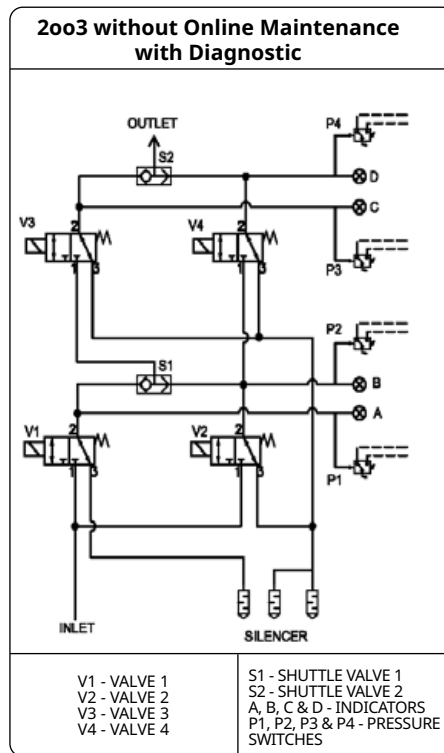


Schematic 6

TR000117ENUS-05_05-23



Schematic 7

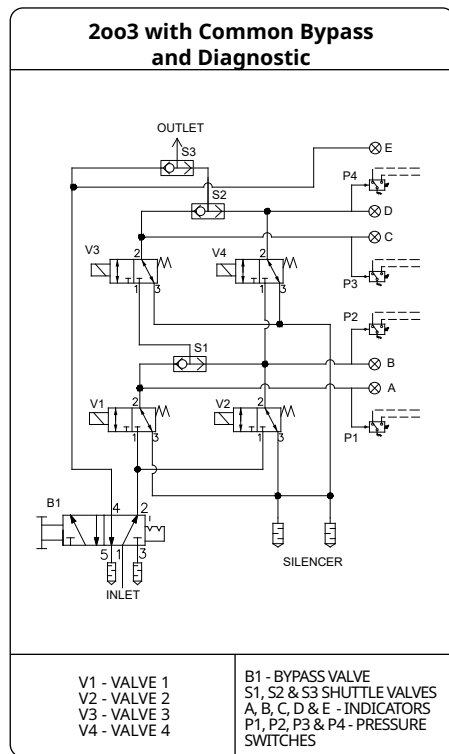


Schematic 8

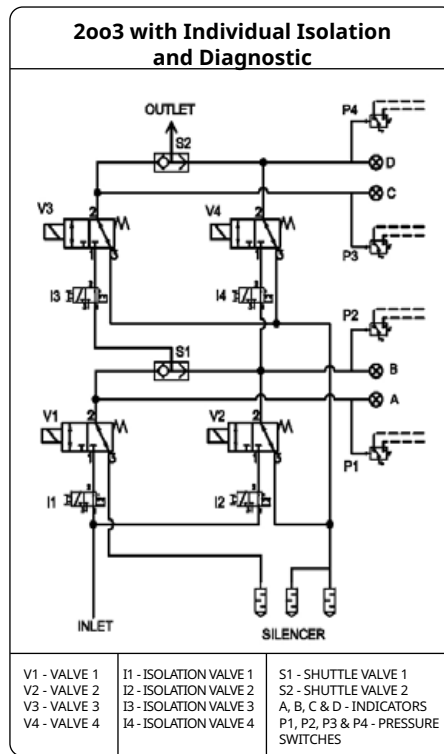
2oo3 Logic Table*

CH 1	CH 2	CH 3	Outlet	
V1	V2	V3	V4	
1	0	0	0	0
1	1	0	0	0
1	1	1	0	1
1	1	1	1	1
0	1	0	0	0
0	1	1	0	0
0	1	1	1	1
0	1	0	1	1
0	0	1	0	0
0	0	1	1	0
1	0	1	1	1
1	0	1	0	1
0	0	0	1	0
1	0	0	1	1
1	1	0	1	1
0	0	0	0	0

CH 1 - CHANNEL 1
CH 2 - CHANNEL 2
CH 3 - CHANNEL 3
0 - VALVE DE-ENERGIZED
1 - VALVE ENERGIZED
* FOR SCHEMATIC - 7



Schematic 9



Schematic A

2oo3 Logic Table*

CH 1	CH 2	CH 3	Outlet	
V1	V4	V2	V3	
1	0	0	0	0
1	0	1	0	0
1	0	1	1	1
1	1	1	1	1
0	0	1	0	0
0	0	1	1	1
0	1	1	1	1
0	1	1	0	1
0	0	0	1	0
0	1	0	1	0
1	1	0	1	1
1	0	0	1	1
0	1	0	0	0
1	1	0	0	0
1	1	1	0	1
0	0	0	0	0

CH 1 - CHANNEL 1
CH 2 - CHANNEL 2
CH 3 - CHANNEL 3
0 - VALVE DE-ENERGIZED
1 - VALVE ENERGIZED
* FOR SCHEMATIC - 8, 9, A

Dimensions (mm), Weight (kg)



TYPE 01:
Epoxy moulded
SC : IEC 335 / ISO 4400

327B102/202/103/203/132/232/112/212/182
327A610/606/616/620



TYPE 02:
Metal, epoxy coated / AISI 316 SS
WP / WS : IEC 335
EM / WSEM : EN/IEC 60079-7, 60079-18
EN/IEC 60079-31

327B102/202/103/203/132/232/112/212/182
327A610/606/616/620



TYPE 03:
Aluminum, epoxy coated / AISI 316L SS
NF / WSNF : EN/IEC 60079-1, 60079-31
NFIS / WSNFIS : EN/IEC 60079-11, 60079-31

327B102/202/302/103/203/303/132/232/112/212/182/312
327A610/606/616/620



TYPE 04:
AISI 316L SS
WSCR : EN/IEC 60079-0, 60079-1, 60079-31
WSCREM : EN/IEC 60079-0, 60079-7, 60079-18
EN/IEC 60079-31
WSCRIS : EN/IEC 60079-0, 60079-11, 60079-31

327B102/202/302/332/112/312/382
327A610/606/616/620



TYPE 05:
Epoxy moulded, Type 7/9
EV/EVHT : Class I, Division 1, Groups A, B, C, D,
Class II, Division 1, Groups E, F, G
EVMF/EVMH : Surge Suppression,
Class I, Division 1, Groups A, B, C, D,
Class II, Division 1, Groups E, F, G

327G032/G042/G052/H302/H312

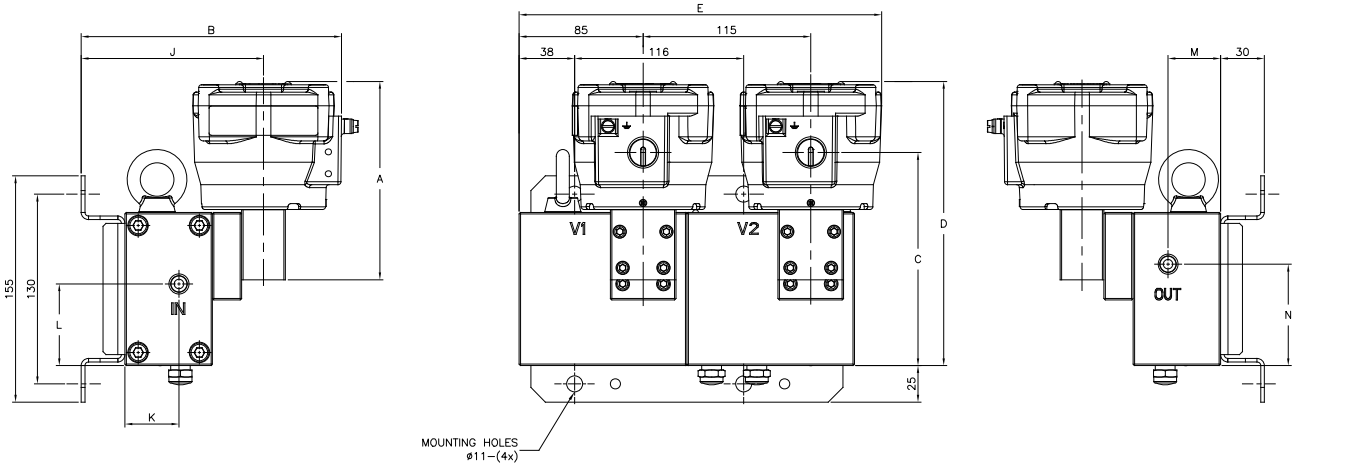


TYPE 06:
Epoxy moulded, aluminum junction box, Type 7/9
JBFE : Class I, Division 1, Groups B, C, D,
Class II, Division 1, Groups E, F, G

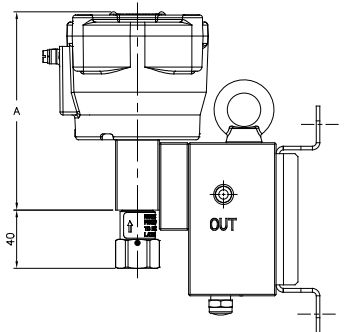
327G032/G042/G052/H302/H312

Dimensions (mm), Weight (kg)

1002 Configuration without Online Maintenance and Diagnostic



CONSTRUCTION REF - 1

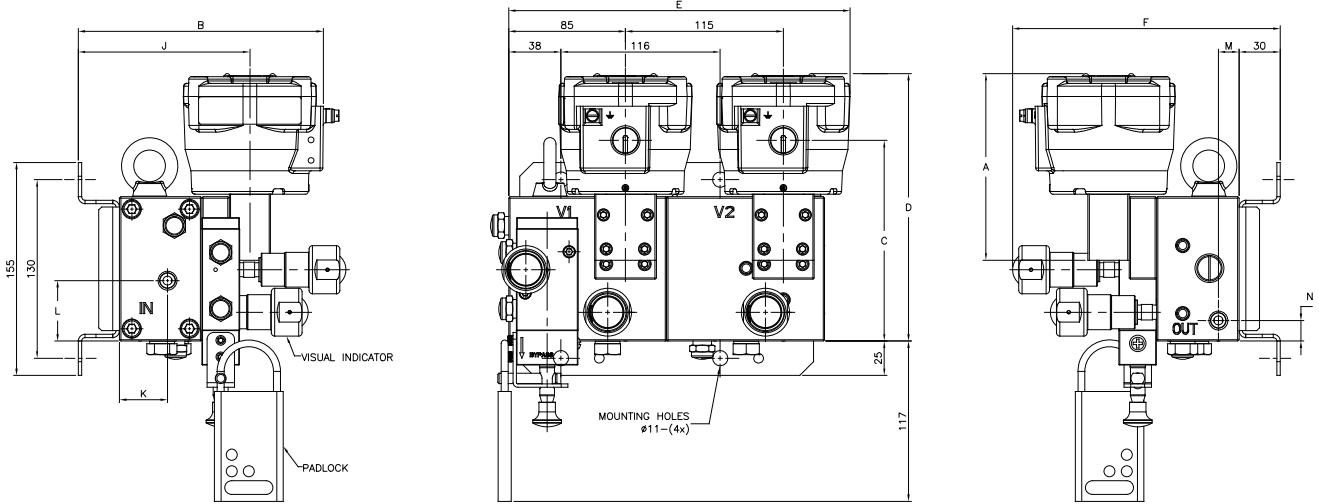


CONSTRUCTION REF - 2

Construction Ref	Basic Catalog No.	Type	Enclosure	A	B	C	D	E	J	K	L	M	N	Approx. Weight (Kg)					
1 (AUTO RESET)	327B102/112/ 202/212	01	SC	109	190	-	168	230	125	37	56	36	70	16					
		02	WP/WS/EM	112	205	-	171	239						17					
		03	NF/WSNF	136	180	146	195	249						19/21					
		04	WSCR/WSCREM	140	200	160	199	246						20					
	327B302/312	03	NF/WSNF/NFIS/WSNFIS	146	180	156	205	249						19/21					
		04	WSCR/WSCREM/WSCRIS	140	200	160	199	246						20					
	327B103/203	01	01	SC	109	190	-	168						230	8				
			02	WP/EM	112	205	-	171						239	8				
			03	NF	136	180	146	195						249	11				
	327B303	03	03	NF/NFIS	146	180	156	205						249	11				
			05	EV	99	177	133	158						230	17				
	327G042/052	06	06	JBEF	118	281	134	177						244	19				
			05	EV/EVHT/EVMEF/EVMH	102	183	134	161						231	17				
	327H312/302	06	06	JBEF	118	281	134	177						244	19				
			01	SC	134	175	-	166						230	17				
	327A610/606	02	02	WP/WS/EM	140	185	126	171						239	105	36	51	35	68
03			NF/WSNF	163	160	145	194	249	18/21										
04		WSCR/WSCREM	167	180	159	198	246	20											
01		SC	109	190	-	168	230	16											
2 (MO/MANUAL RESET)	327B132/182/232	02	WP/WS/EM	112	205	-	171	239	125	37	56	36	70	17					
		03	NF/WSNF	136	180	146	195	249						20/22					
		04	WSCR/WSCREM	140	200	160	199	246						21					
	327G032	05	05	EV	99	177	133	158						230	17				
			06	JBEF	118	281	134	177						244	21				
	327A620/616	01	01	SC	134	175	-	166						230	16				
			03	NF/WSNF	163	160	145	194						249	19/21				
			04	WSCR/WSCREM	167	180	159	198						246	20				
	327A616	02	WP/WS/EM	140	185	126	171	239						105	36	51	35	68	17

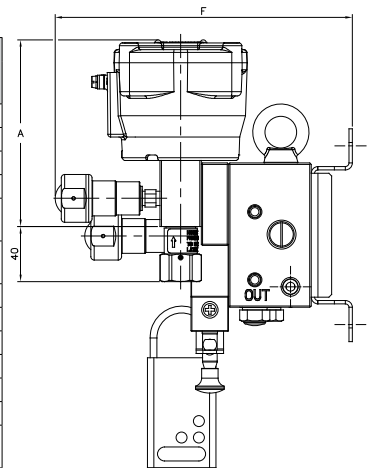
Dimensions (mm), Weight (kg)

1002 Configuration with Common Bypass, without Diagnostic



CONSTRUCTION REF - 1

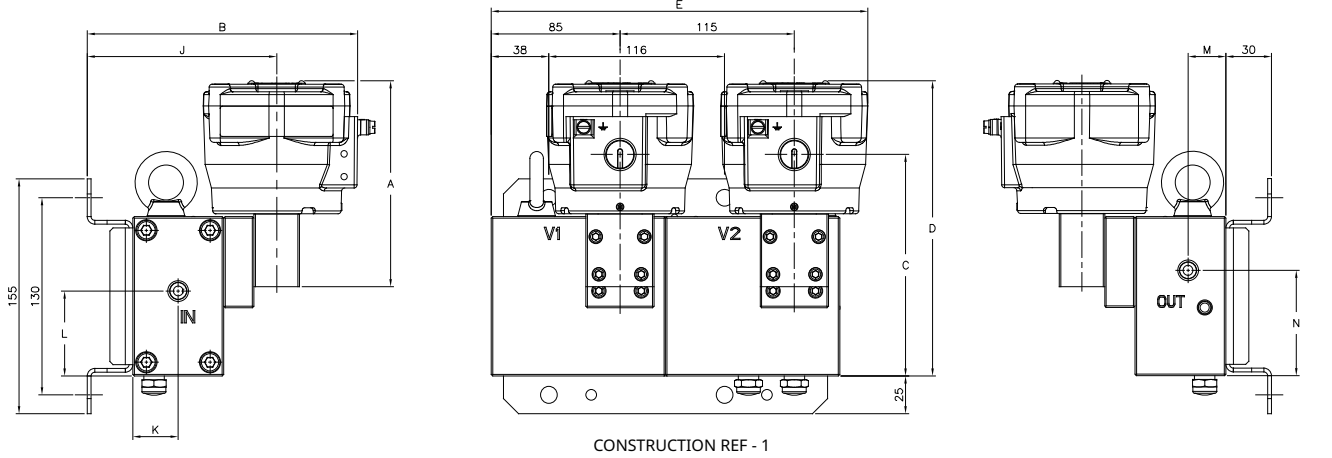
Construction Ref	Basic Catalog No.	Type	Enclosure	A	B	C	D	E	J	K	L	M	N	F		Approx. Weight (Kg)	
														Visual Indicator	Pressure Gauge		
1 (AUTO RESET)	327B102/112/ 202/212	01	SC	109	190	-	168	230									18
		02	WP/WS/EM	112	205	-	171	239									19
		03	NF/WSNF	136	180	146	195	249									21/23
		04	WSCR/WSCREM	140	200	160	199	246									22
	327B302/312	03	NF/WSNF/NFIS/ WSNFIS	146	180	156	205	249									21/23
		04	WSCR/WSCREM/ WSCRIS	140	200	160	199	246									22
	327B103/203	01	SC	109	190	-	168	230	125	35	44	15	15	195	202		10
		02	WP/EM	112	205	-	171	239									10
		03	NF	136	180	146	195	249									13
		03	NF/NFIS	146	180	156	205	249									13
		05	EV	99	177	133	158	230									19
		06	JBEF	118	281	134	177	244									21
327H312/302	05	EV/EVHT/EVMF/ EVMH	102	183	134	161	231									19	
	06	JBEF	118	281	134	177	244									21	
327A610/606	01	SC	134	175	-	166	230									19	
	02	WP/WS/EM	140	185	126	171	239	105	33	34	20	50	202	181		19	
	03	NF/WSNF	163	160	145	194	249									20/23	
	04	WSCR/WSCREM	167	180	159	198	246									22	
2 (MO/MANUAL RESET)	327B132/182/232	01	SC	109	190	-	168	230								18	
		02	WP/WS/EM	112	205	-	171	239								19	
		03	NF/WSNF	136	180	146	195	249	125	35	44	15	15	217	224		22/23
	327B332/382	04	WSCR/WSCREM	140	200	160	199	246									23
		05	EV	99	177	133	158	230									19
	327G032	06	JBEF	118	281	134	177	244									21
		01	SC	134	175	-	166	230									19
	327A620/616	03	NF/WSNF	163	160	145	194	249	105	33	34	20	50	202	181		21/23
		04	WSCR/WSCREM	167	180	159	198	246									22
	327A616	02	WP/WS/EM	140	185	126	171	239									19



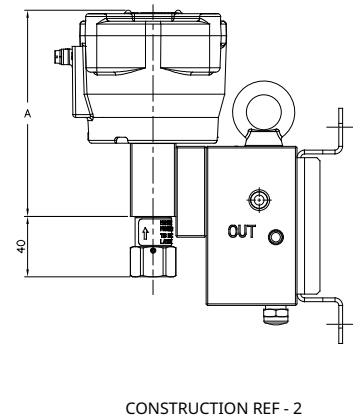
CONSTRUCTION REF - 2

Dimensions (mm), Weight (kg)

2oo2 Configuration without Online Maintenance and Diagnostic

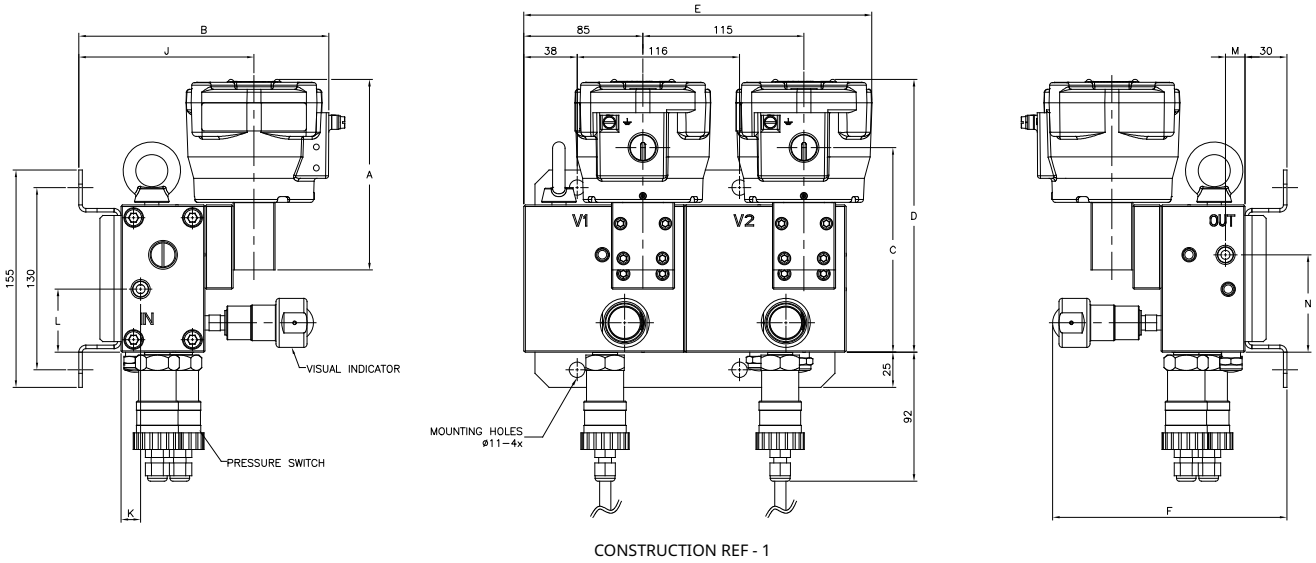


Construction Ref	Basic Catalog No.	Type	Enclosure	A	B	C	D	E	J	K	L	M	N	Approx. Weight (Kg)
1 (AUTO RESET)	327B102/112/ 202/212	01	SC	109	190	-	168	230	125	30	56	25	70	16
		02	WP/WS/EM	112	205	-	171	239						17
		03	NF/WSNF	136	180	146	195	249						19/21
		04	WSCR/WSCREM	140	200	160	199	246						20
	327B302/312	03	NF/WSNF/NFIS/ WSNFIS	146	180	156	205	249						19/21
		04	WSCR/WSCREM/ WSCRIS	140	200	160	199	246						20
	327B103/203	01	SC	109	190	-	168	230						8
		02	WP/EM	112	205	-	171	239						8
		03	NF	136	180	146	195	249						11
	327B303	03	NF/NFIS	146	180	156	205	249						11
		05	EV	99	177	133	158	230						17
	327G042/052	06	JBEF	118	281	134	177	244						19
		327H312/302	05	EV/EVHT/EVMF/ EVMH	102	183	134	161						231
	327A610/606		06	JBEF	118	281	134	177						244
		01	SC	134	175	-	166	230						17
		02	WP/WS/EM	140	185	126	171	239						17
03		NF/WSNF	163	160	145	194	249	18/21						
2 (MO/MANUAL RESET)	327B132/182/232	04	WSCR/WSCREM	167	180	159	198	246	20					
		01	SC	109	190	-	168	230	16					
		02	WP/WS/EM	112	205	-	171	239	17					
	327B332/382	03	NF/WSNF	136	180	146	195	249	20/22					
		04	WSCR/WSCREM	140	200	160	199	246	21					
	327G032	05	EV	99	177	133	158	230	17					
		06	JBEF	118	281	134	177	244	19					
	327A620/616	01	SC	134	175	-	166	230	16					
		03	NF/WSNF	163	160	145	194	249	19/21					
		04	WSCR/WSCREM	167	180	159	198	246	20					
	327A616	02	WP/WS/EM	140	185	126	171	239	17					

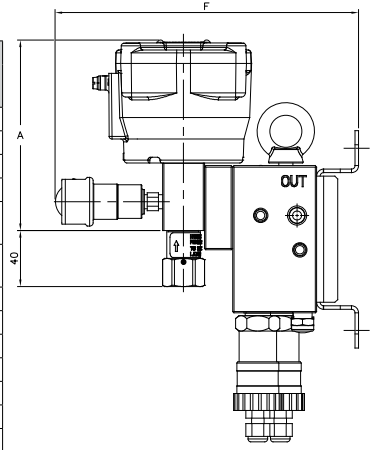


Dimensions (mm), Weight (kg)

2oo2 Configuration without Online Maintenance, with Diagnostic



CONSTRUCTION REF - 1

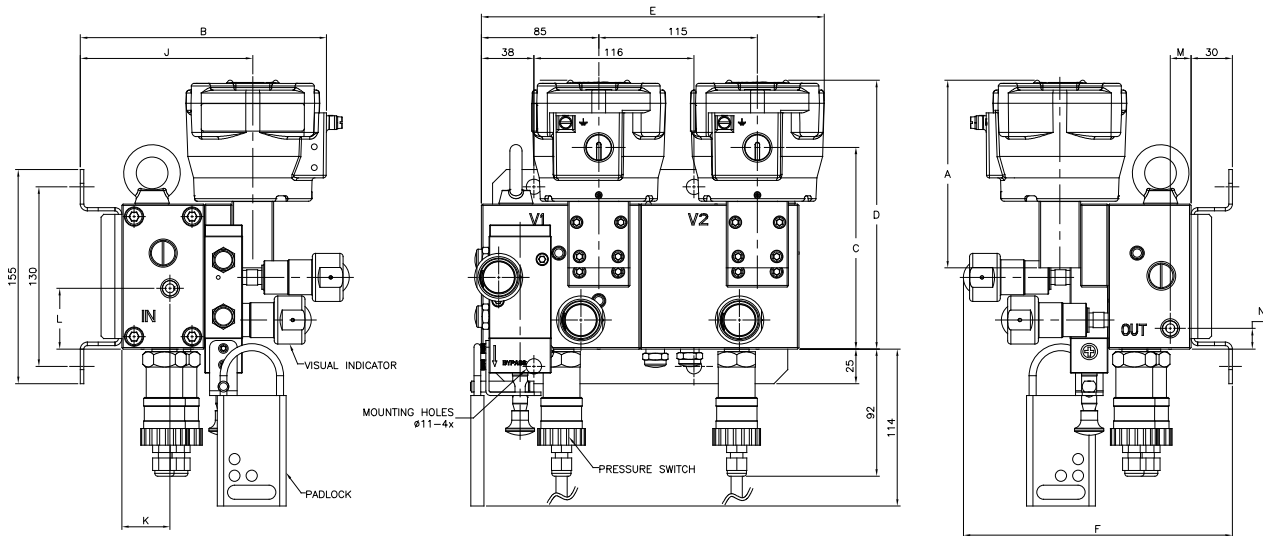


CONSTRUCTION REF - 2

Construction Ref	Basic Catalog No.	Type	Enclosure	A	B	C	D	E	J	K	L	M	N	F		Approx. Weight (Kg)	
														Visual Indicator	Pressure Gauge		
1 (AUTO RESET)	327B102/112/ 202/212	01	SC	109	190	-	168	230									17
		02	WP/WS/EM	112	205	-	171	239									18
		03	NF/WSNF	136	180	146	195	249									20/22
		04	WSCR/WSCREM	140	200	160	199	246									21
	327B302/312	03	NF/WSNF/NFIS/ WSNFIS	146	180	156	205	249									20/22
		04	WSCR/WSCREM/ WSCRIS	140	200	160	199	246									21
	327B103/203	01	SC	109	190	-	168	230	125	14	45	14	70	167	174		9
		02	WP/EM	112	205	-	171	239									9
	327B303	03	NF	136	180	146	195	249									12
		03	NF/NFIS	146	180	156	205	249									12
	327G042/052	05	EV	99	177	133	158	230									18
		06	JBEF	118	281	134	177	244									20
327H312/302	05	EV/EVHT/EVMF/ EVMH	102	183	134	161	231									18	
	06	JBEF	118	281	134	177	244									20	
327A610/606	01	SC	134	175	-	166	230									18	
	02	WP/WS/EM	140	185	126	171	239	105	14	51	14	68	202	181		18	
	03	NF/WSNF	163	160	145	194	249									19/22	
	04	WSCR/WSCREM	167	180	159	198	246									21	
2 (MO/MANUAL RESET)	327B132/182/232	01	SC	109	190	-	168	230									18
		02	WP/WS/EM	112	205	-	171	239									18
		03	NF/WSNF	136	180	146	195	249	125	14	45	14	70	217	224		21/23
	327B332/382	04	WSCR/WSCREM	140	200	160	199	246									22
		05	EV	99	177	133	158	230									18
	327G032	06	JBEF	118	281	134	177	244									20
		01	SC	134	175	-	166	230									18
	327A620/616	03	NF/WSNF	163	160	145	194	249	105	14	51	14	68	202	181		20/22
		04	WSCR/WSCREM	167	180	159	198	246									21
	327A616	02	WP/WS/EM	140	185	126	171	239									18

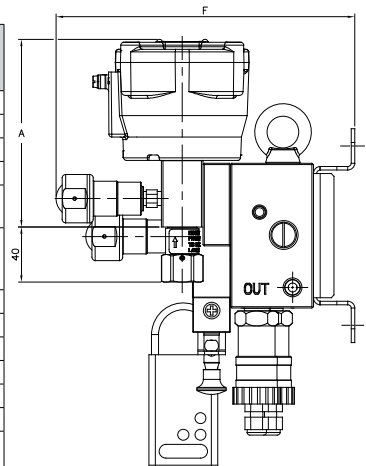
Dimensions (mm), Weight (kg)

2oo2 Configuration with Common Bypass, with Diagnostic



CONSTRUCTION REF - 1

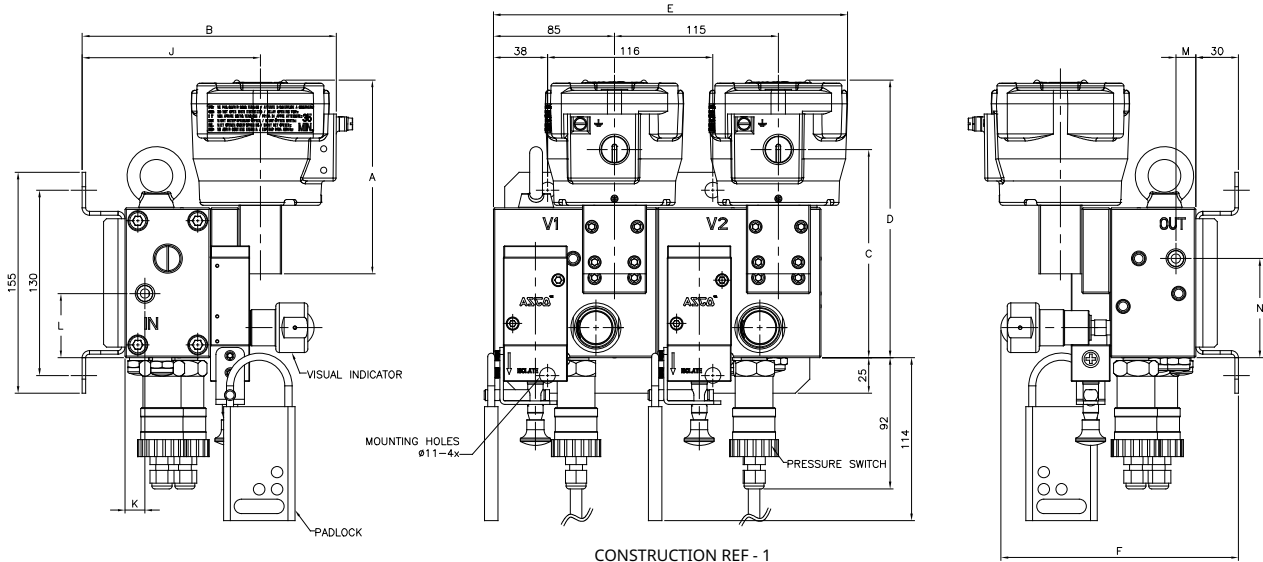
Construction Ref	Basic Catalog No.	Type	Enclosure	A	B	C	D	E	J	K	L	M	N	F	Visual Indicator	Pressure Gauge	Approx. Weight (Kg)
1 (AUTO RESET)	327B102/112/ 202/212	01	SC	109	190	-	168	230									18
		02	WP/WS/EM	112	205	-	171	239									19
		03	NF/WSNF	136	180	146	195	249									21/23
		04	WSCR/WSCREM	140	200	160	199	246									22
	327B302/312	03	NF/WSNF/NFIS/ WSNFIS	146	180	156	205	249									21/23
		04	WSCR/ WSCREM/ WSCRIS	140	200	160	199	246									22
	327B103/203	01	SC	109	190	-	168	230	125	35	44	15	15	195	202		10
		02	WP/EM	112	205	-	171	239									10
		03	NF	136	180	146	195	249									13
	327B303	03	NF/NFIS	146	180	156	205	249									13
		05	EV	99	177	133	158	230									19
	327G042/052	06	JBEF	118	281	134	177	244									21
		05	EV/EVHT/EVMF/ EVMH	102	183	134	161	231									19
	327H312/302	06	JBEF	118	281	134	177	244									21
01		SC	134	175	-	166	230	105	35	34	28	17	202	181		19	
327A610/606	02	WP/WS/EM	140	185	126	171	239									19	
	03	NF/WSNF	163	160	145	194	249									20/23	
	04	WSCR/WSCREM	167	180	159	198	246									22	
	01	SC	109	190	-	168	230	125	35	44	15	15	217	224		18	
2 (MO/MANUAL RESET)	327B132/182/232	02	WP/WS/EM	112	205	-	171	239									19
		03	NF/WSNF	136	180	146	195	249									22/24
		04	WSCR/WSCREM	140	200	160	199	246									23
	327G032	05	EV	99	177	133	158	230									19
		06	JBEF	118	281	134	177	244									21
	327A620/616	01	SC	134	175	-	166	230	105	35	34	28	17	202	181		19
03		NF/WSNF	163	160	145	194	249									21/23	
04		WSCR/WSCREM	167	180	159	198	246									22	
327A616	02	WP/WS/EM	140	185	126	171	239									19	



CONSTRUCTION REF - 2

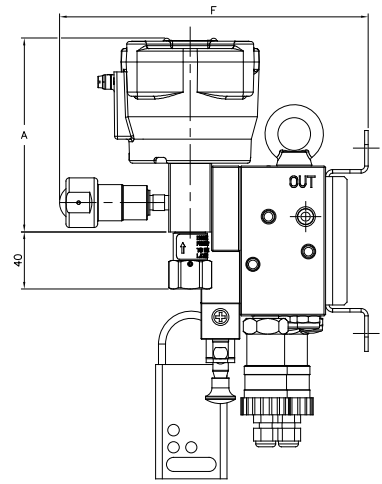
Dimensions (mm), Weight (kg)

2oo2 Configuration with Individual Isolation, with Diagnostic



CONSTRUCTION REF - 1

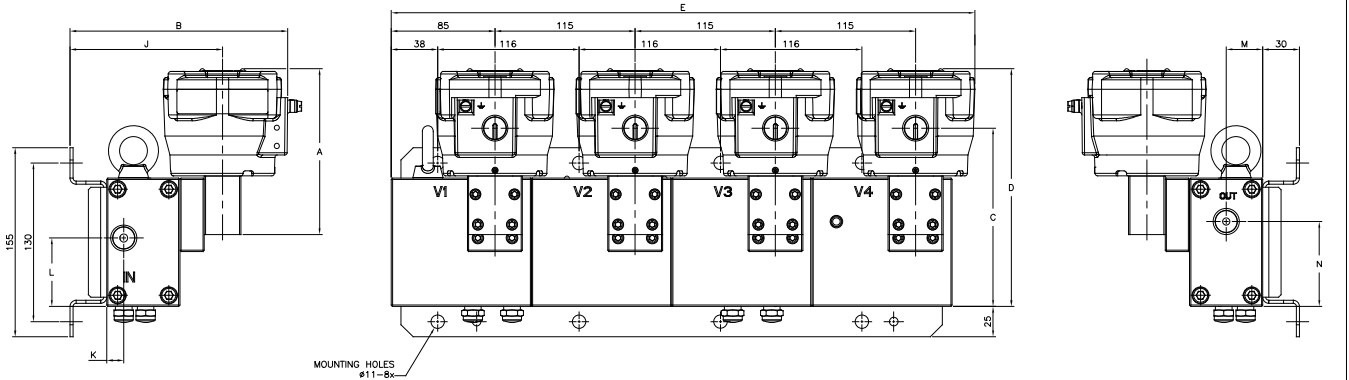
Construction Ref	Basic Catalog No.	Type	Enclosure	A	B	C	D	E	J	K	L	M	N	F		Approx. Weight (Kg)	
														Visual Indicator	Pressure Gauge		
1 (AUTO RESET)	327B102/112/ 202/212	01	SC	109	190	-	168	230								19	
		02	WP/WS/EM	112	205	-	171	239								20	
		03	NF/WSNF	136	180	146	195	249								22/25	
		04	WSCR/WSCREM	140	200	160	199	246								23	
	327B302/312	03	NF/WSNF/NFIS/ WSNFIS	146	180	156	205	249								22/24	
		04	WSCR/ WSCREM/ WSCRIS	140	200	160	199	246								23	
	327B103/203	327B303	01	SC	109	190	-	168	230	125	14	45	14	70	167	174	11
			02	WP/EM	112	205	-	171	239								11
			03	NF	136	180	146	195	249								14
	327G042/052	327H312/302	03	NF/NFIS	146	180	156	205	249								14
			05	EV	99	177	133	158	230								20
	2 (MO/MANUAL RESET)	327A610/606	06	JBEF	118	281	134	177	244								22
05			EV/EVHT/EVMF/ EVMH	102	183	134	161	231								20	
327B132/182/232		327B332/382	06	JBEF	118	281	134	177	244								22
			01	SC	134	175	-	166	230	105	14	45	14	68	202	181	20
		02	WP/WS/EM	140	185	126	171	239								20	
		03	NF/WSNF	163	160	145	194	249								21/24	
327A620/616	327A616	04	WSCR/WSCREM	167	180	159	198	246								23	
		01	SC	134	175	-	166	230	105	14	45	14	68	202	181	20	
327G032	327A616	03	NF/WSNF	163	160	145	194	249								21/24	
		04	WSCR/WSCREM	167	180	159	198	246								23	
	327B132/182/232	327A616	02	WP/WS/EM	140	185	126	171	239								20
			02	WP/WS/EM	112	205	-	171	239	125	14	45	14	70	217	224	23/25
327B332/382	327A616	03	NF/WSNF	136	180	146	195	249								24	
		04	WSCR/WSCREM	140	200	160	199	246								24	
327G032	327A616	05	EV	99	177	133	158	230								20	
		06	JBEF	118	281	134	177	244								22	



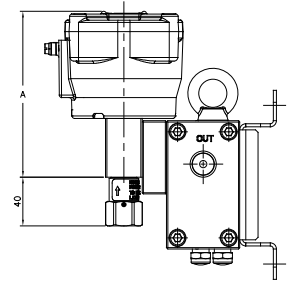
CONSTRUCTION REF - 2

Dimensions (mm), Weight (kg)

2003 Configuration without Online Maintenance and Diagnostic



CONSTRUCTION REF - 1

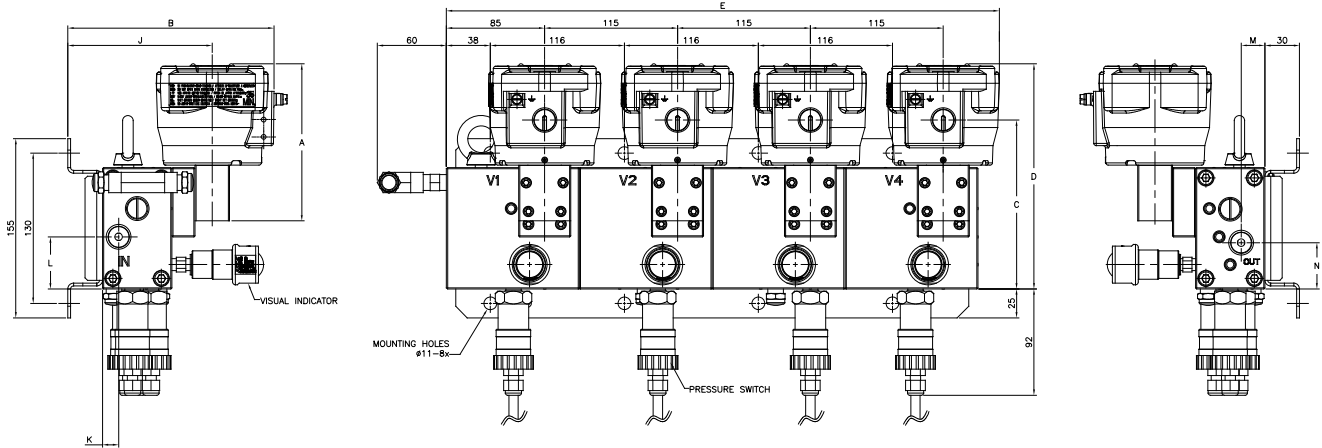


CONSTRUCTION REF - 2

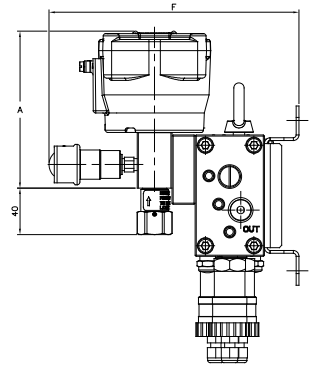
Construction Ref	Basic Catalog No.	Type	Enclosure	A	B	C	D	E	J	K	L	M	N	Approx. Weight (Kg)
1 (AUTO RESET)	327B102/112/ 202/212	01	SC	109	190	-	168	460	125	14	56	30	70	30
		02	WP/WS/EM	112	205	-	171	469						31
		03	NF/WSNF	136	180	146	195	479						36/41
		04	WSCR/WSCREM	140	200	160	199	476						38
	327B302/312	03	NF/WSNF/NFIS/ WSNFIS	146	180	156	205	479						36/41
		04	WSCR/WSCREM/ WSCRS	140	200	160	199	476						38
	327B103/203	01	SC	109	190	-	168	460						14
			WP/EM	112	205	-	171	469						15
			NF	136	180	146	195	479						21
	327B303	03	NF/NFIS	146	180	156	205	479						21
			EV	99	177	133	158	230						30
	327G042/052	05	JBEF	118	281	134	177	244						35
			EV/EVHT/EVMF/ EVMH	102	183	134	161	231						32
	327H312/302	06	JBEF	118	281	134	177	244						35
			01	SC	134	175	-	166						460
	327A610/606	02	WP/WS/EM	140	185	126	171	469						31
NF/WSNF			163	160	145	194	479	34/40						
04		WSCR/WSCREM	167	180	159	198	476	37						
		01	SC	109	190	-	168	460	31					
2 (MO/MANUAL RESET)	327B132/182/232	02	WP/WS/EM	112	205	-	171	469	32					
		03	NF/WSNF	136	180	146	195	479	37/42					
		04	WSCR/WSCREM	140	200	160	199	476	39					
	327B332/382	05	EV	99	177	133	158	230	31					
			JBEF	118	281	134	177	244	36					
	327G032	01	SC	134	175	-	166	460	32					
			03	NF/WSNF	163	160	145	194	479	35/41				
	327A620/616	04	WSCR/WSCREM	167	180	159	198	476	38					
			02	WP/WS/EM	140	185	126	171	469	32				

Dimensions (mm), Weight (kg)

2003 Configuration without Online Maintenance, with Diagnostic



CONSTRUCTION REF - 1

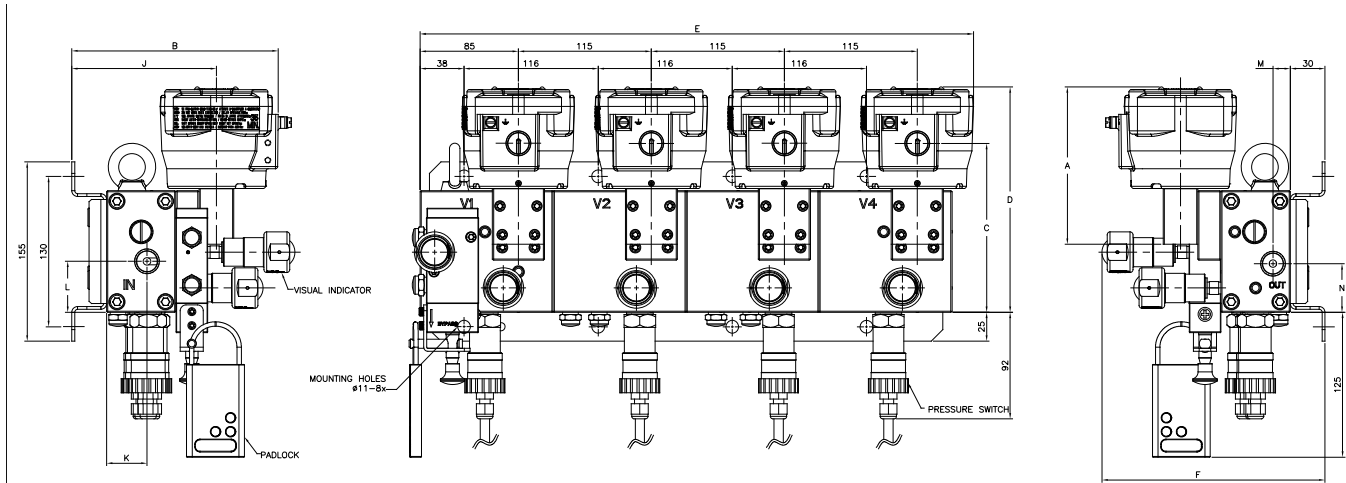


CONSTRUCTION REF - 2

Construction Ref	Basic Catalog No.	Type	Enclosure	A	B	C	D	E	J	K	L	M	N	F		Approx. Weight (Kg)							
														Visual Indicator	Pressure Gauge								
1 (AUTO RESET)	327B102/112/ 202/212	01	SC	109	190	-	168	460	125	14	45	21	40	167	174	33							
		02	WP/WS/EM	112	205	-	171	469								34							
		03	NF/WSNF	136	180	146	195	479								39/44							
		04	WSCR/WSCREM	140	200	160	199	476								41							
	327B302/312	03	NF/WSNF/NFIS/ WSNFIS	146	180	156	205	479								39/44							
		04	WSCR/ WSCREM/ WSCRIS	140	200	160	199	476								41							
	327B103/203	01	SC	109	190	-	168	460								105	14	51	15	68	202	181	17
		02	WP/EM	112	205	-	171	469															18
		03	NF	136	180	146	195	479															24
	327B303	03	NF/NFIS	146	180	156	205	479								24							
		05	EV	99	177	133	158	230								33							
	327G042/052	06	JBEF	118	281	134	177	244								38							
		327H312/302	05	EV/EVHT/EVMF/ EVMH	102	183	134	161								231	35						
	327A610/606		06	JBEF	118	281	134	177								244	38						
		01	SC	134	175	-	166	460								34							
		02	WP/WS/EM	140	185	126	171	469								34							
03		NF/WSNF	163	160	145	194	479	37/43															
2 (MO/MANUAL RESET)	327B132/182/232	04	WSCR/WSCREM	167	180	159	198	476	40														
		01	SC	109	190	-	168	460	34														
		02	WP/WS/EM	112	205	-	171	469	35														
	327B332/382	03	NF/WSNF	136	180	146	195	479	40/45														
		04	WSCR/WSCREM	140	200	160	199	476	42														
	327G032	05	EV	99	177	133	158	230	34														
		06	JBEF	118	281	134	177	244	39														
	327A620/616	01	SC	134	175	-	166	460	35														
		03	NF/WSNF	163	160	145	194	479	38/44														
		04	WSCR/WSCREM	167	180	159	198	476	41														
		02	WP/WS/EM	140	185	126	171	469	35														

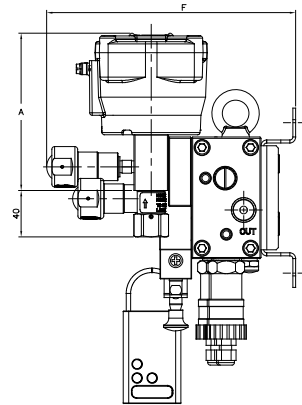
Dimensions (mm), Weight (kg)

2003 Configuration with Common Bypass, with Diagnostic



CONSTRUCTION REF - 1

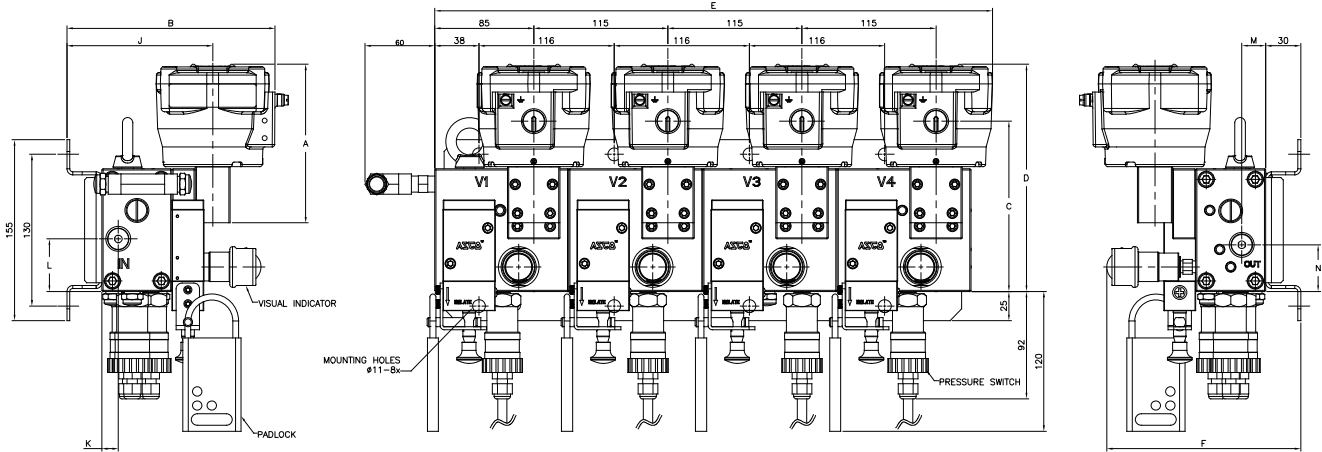
Construction Ref	Basic Catalog No.	Type	Enclosure	A	B	C	D	E	J	K	L	M	N	F		Approx. Weight (Kg)
														Visual Indicator	Pressure Gauge	
1 (AUTO RESET)	327B102/112/ 202/212	01	SC	109	190	-	168	460	125	35	44	14	43	195	202	34
		02	WP/WS/EM	112	205	-	171	469								35
		03	NF/WSNF	136	180	146	195	479								40/45
		04	WSCR/WSCREM	140	200	160	199	476								42
	327B302/312	03	NF/WSNF/NFIS/ WSNFIS	146	180	156	205	479								40/45
		04	WSCR/WSCREM/ WSCRIS	140	200	160	199	476								42
	327B103/203	01	SC	109	190	-	168	460								18
		02	WP/EM	112	205	-	171	469								19
	327B303	03	NF	136	180	146	195	479								25
		03	NF/NFIS	146	180	156	205	479								25
	327G042/052	05	EV	99	177	133	158	230								34
		06	JBEF	118	281	134	177	244								39
	327H312/302	05	EV/EVHT/EVMF/ EVMH	102	183	134	161	231								36
		06	JBEF	118	281	134	177	244								39
327A610/606	01	SC	134	175	-	166	460	35								
	02	WP/WS/EM	140	185	126	171	469	35								
	03	NF/WSNF	163	160	145	194	479	38/44								
	04	WSCR/WSCREM	167	180	159	198	476	41								
2 (MO/MANUAL RESET)	327B132/182/232	01	SC	109	190	-	168	460	35							
		02	WP/WS/EM	112	205	-	171	469	36							
		03	NF/WSNF	136	180	146	195	479	41/46							
	327B332/382	04	WSCR/WSCREM	140	200	160	199	476	43							
		05	EV	99	177	133	158	230	35							
	327G032	06	JBEF	118	281	134	177	244	40							
		01	SC	134	175	-	166	460	36							
	327A620/616	03	NF/WSNF	163	160	145	194	479	39/45							
		04	WSCR/WSCREM	167	180	159	198	476	42							
		02	WP/WS/EM	140	185	126	171	469	36							



CONSTRUCTION REF - 2

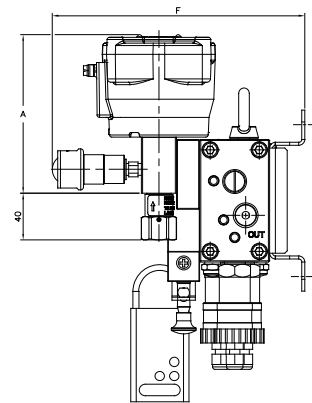
Dimensions (mm), Weight (kg)

2003 Configuration with Individual Isolation, with Diagnostic



CONSTRUCTION REF - 1

Construction Ref	Basic Catalog No.	Type	Enclosure	A	B	C	D	E	J	K	L	M	N	F		Approx. Weight (Kg)	
														Visual Indicator	Pressure Gauge		
1 (AUTO RESET)	327B102/112/ 202/212	01	SC	109	190	-	168	460									36
		02	WP/WS/EM	112	205	-	171	469									37
		03	NF/WSNF	136	180	146	195	479									42/47
		04	WSCR/WSCREM	140	200	160	199	476									44
	327B302/312	03	NF/WSNF/NFIS/ WSNFIS	146	180	156	205	479									42/47
		04	WSCR/ WSCREM/ WSCRIS	140	200	160	199	476									44
	327B103/203	01	SC	109	190	-	168	460	125	14	45	21	40		167	174	20
		02	WP/EM	112	205	-	171	469									21
		03	NF	136	180	146	195	479									27
		03	NF/NFIS	146	180	156	205	479									27
		05	EV	99	177	133	158	230									36
		06	JBEF	118	281	134	177	244									41
	327H312/302	05	EV/EVHT/EVMF/ EVMH	102	183	134	161	231									38
		06	JBEF	118	281	134	177	244									41
	327A610/606	01	SC	134	175	-	166	460									37
		02	WP/WS/EM	140	185	126	171	469	105	14	45	15	68		202	181	37
03		NF/WSNF	163	160	145	194	479									40/46	
04		WSCR/WSCREM	167	180	159	198	476									43	
2 (MO/MANUAL RESET)	327B132/182/232	01	SC	109	190	-	168	460									37
		02	WP/WS/EM	112	205	-	171	469									38
		03	NF/WSNF	136	180	146	195	479	125	14	45	21	40		217	224	43/48
	327B332/382	04	WSCR/WSCREM	140	200	160	199	476									45
		05	EV	99	177	133	158	230									37
	327G032	06	JBEF	118	281	134	177	244									42
		01	SC	134	175	-	166	460									38
	327A620/616	03	NF/WSNF	163	160	145	194	479	105	14	45	15	68		202	181	41/47
		04	WSCR/WSCREM	167	180	159	198	476									44
	327A616	02	WP/WS/EM	140	185	126	171	469									38



CONSTRUCTION REF - 2

Spares Code

Solenoid Valve

Description: ASCO 327 series, 3/2 way, direct acting, normally closed, 5.7mm/12mm orifice, stainless steel 316/aluminum

X 327 536397 001 H1

Special Mounting for 141 Series
X

Valve Series
327
307

Ordering Code

536397	327B102 Basic Catalog
536398	327B202 Basic Catalog
536399	327B302 Basic Catalog
536400	327B132 Basic Catalog
536401	327B232 Basic Catalog
536402	327B103 Basic Catalog
536403	327B203 Basic Catalog
536404	327H102 Basic Catalog
536405	327B303 Basic Catalog
536406	327B332 Basic Catalog
536407	327G032 Basic Catalog
536408	327G042 Basic Catalog
536409	327H132 Basic Catalog
545549	327B112 Basic Catalog
545550	327B212 Basic Catalog
545551	327B312 Basic Catalog
545552	327B182 Basic Catalog
545553	327B382 Basic Catalog
545554	327G052 Basic Catalog
545555	327H112 Basic Catalog
545556	327H182 Basic Catalog
548533	327H302 Basic Catalog
548534	327H312 Basic Catalog
543587	327A610 Basic Catalog (High Flow)
543588	327A606 Basic Catalog (High Flow)
543589	327A620 Basic Catalog (High Flow)
543590	327A616 Basic Catalog (High Flow)
503838	307B005 ⁽¹⁾ Basic Catalog

⁽¹⁾ Selection of base catalog no. 307B005 will restrict to the voltage code H1 and solenoid operator codes WSTIS/WSETIS

Voltage

H1	24V DC
H3	12V DC
H9	48V DC
HJ	110V DC
HD	120V DC
J1	125V DC
HQ	24V/50-60HZ AC
JY	110V/50-60HZ AC
HC	115V/50-60HZ AC
HA	120V/50-60HZ AC
JV	220V/50-60HZ AC ⁽²⁾
HH	230V/50-60HZ AC ⁽²⁾
F1	24V DC
F3	12V DC
F9	48V DC
FJ	110V DC
FD	120V DC
E1	125V DC
FQ	24V/50-60HZ AC
EY	110V/50-60HZ AC
FC	115V/50-60HZ AC
FA	120V/50-60HZ AC
EV	220V/50-60HZ AC ⁽²⁾
FH	230V/50-60HZ AC ⁽²⁾

⁽²⁾ Not applicable for low and reduced power options

Electrical Connection/Enclosure Protection⁽³⁾⁽⁴⁾

*** Three digit code for applicable Electrical connection and other options

⁽³⁾ Refer ASCO representative for applicable electrical connection/enclosure protection and code (3 digit)


⁽⁴⁾ Refer solenoid operator chart



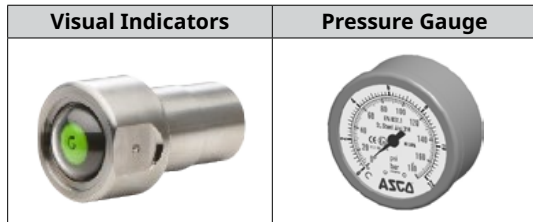
Spares Code

3 Way Push-Pull Manual Valve with LOTO

Description: ASCO 551 series, 3/2 way, manual push button operated, normally closed, with 6 & 8mm orifice, stainless steel 316 and lock out tag out for tamper proof lock arrangement. Used for common by pass in 1oo2, 2oo2 & 2oo3 and individual isolation in 2oo2 & 2oo3

	X	551	506166	001	00	
Special Mounting for 141 Series						Voltage Code⁽¹⁾
X						⁽¹⁾ Push pull manual operation and voltage not applicable
Valve Series						Material & Temperature Options⁽²⁾
551						⁽²⁾ Refer ASCO representative for applicable options and code (3 digit)
Drawing Code						
506166 Std Flow, Isolation Valve						
528799 Std Flow, Bypass Valve						
543545 High Flow, Isolation Valve						
543561 High Flow, Bypass Valve						

Accessories



Accessories - Spares Code

Ordering Code	Item Description	Temperature Range
C325937	Pressure gauge (full stainless steel)	-40°C to +90°C
508133-010	Visual indicator (full stainless steel)	-23°C to +95°C
508133-005*	Visual indicator (full stainless steel)	-23°C to +95°C
509123-003	Pressure switch (weatherproof & intrinsically safe wiring)	-20°C to +80°C
509123-004	Pressure switch (explosion proof wiring: flying leads)	-40°C to +90°C

*Only applicable for solenoid valve "Q" selection. (Refer to pg.5 for details)

ARCS - Customised Solutions



ASCO is also able to offer customised solutions to meet specific redundancy requirements, complete with options to integrate valve automation accessories like filter regulators, pilot operated valves, junction boxes for switches (feedback wiring), visual indicators, gauges and more. Available in open frame or explosion proof enclosures (Exia, Exe and Exd protection).

TR000117ENUS-05_05-23